

9'x7'x6' (ID) Doghouse Vault

120-60907
L1008-7248

PRODUCT INFORMATION

9'x7'x6' (ID)
UTILITY VAULT
VAULT = 14,400 #
LID = 4,400 #
*design may vary

SPECIFICATIONS

MEETS ASTM C858 & C857
RATING: NON-TRAFFIC
CONCRETE TO BE 4,000 PSI
@ 28 DAYS
REINFORCING BAR MEETS
ASTM A 615

10" STEPS ON 12" CENTERS
BUTYL SEALANT MEETING ASTM
C 990 TO BE USED ON JOINTS

ACCESS HATCH SHALL BE
FABRICATED WITH 1/4"
ALUMINUM DIAMOND PLATE
DESIGNED TO SUPPORT 300 psf
72"x48" FRAME OPENING
EQUIPPED WITH: SLAM LOCK,
PUSH MOUNT LIFT HANDLE,
HOLD-OPEN ARM, SS HARDWARE
AND HINGES

DOGHOUSE SIZE & LOCATION
MAY VARY UPON REQUEST
CALL FOR ADDITIONAL SPECS

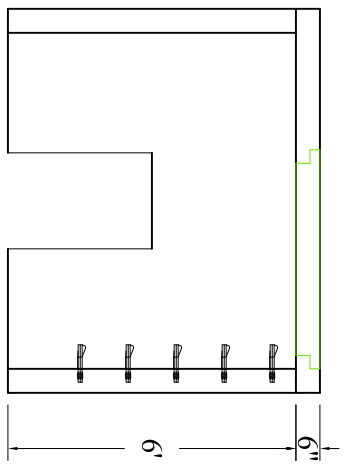
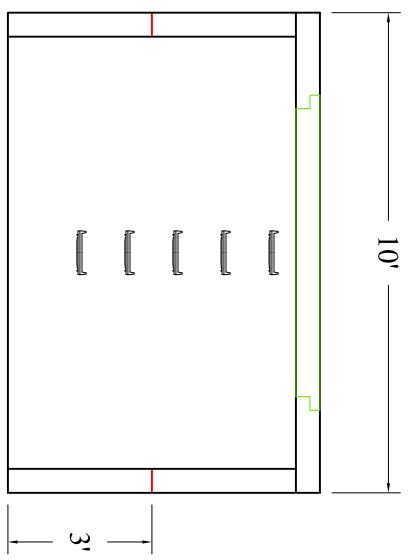
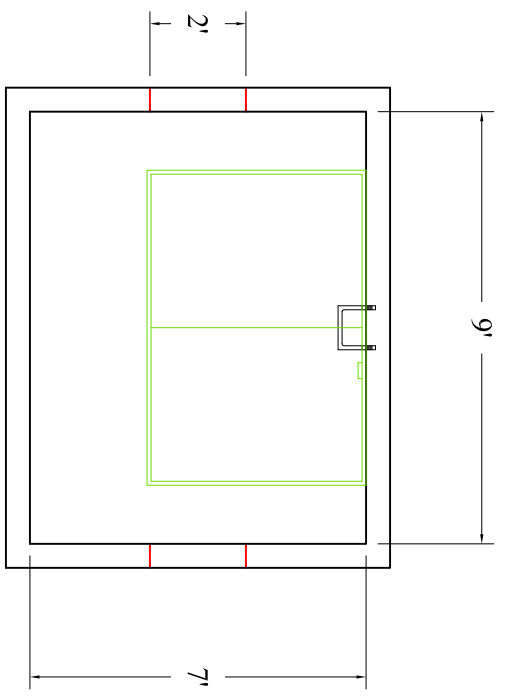


DRAWING INFORMATION

Drawn By: JJG
Checked By: _____
Revision: 1
Date: 2/6/17

APPROVED BY: _____

print: _____
sign: _____
*actual dimensions may vary slightly



Scale: 1/4" = 1'



**BARTOW
PRECAST**

770.382.4462
sales@bartowprecast.com
WWW.BARTOWPRECAST.COM