

7'x7'x6' (ID) DOGHOUSE VAULT

120-60707
L0808-3636 R

PRODUCT INFORMATION

7'x7'x6' (ID)
UTILITY VAULT

VAULT = 12,600 #
LID = 4,150 #

SPECIFICATIONS

MEETS ASTM C858 & C857

RATING: A-8 (H-10)

CONCRETE TO BE 4,000 PSI
@ 28 DAYS

REINFORCING BAR MEETS
ASTM A 615

10" STEPS ON 12" CENTERS

BUTYL SEALANT MEETING ASTM
C 990 TO BE USED ON JOINTS

ACCESS HATCH SHALL BE
FABRICATED WITH 1/4"
ALUMINUM DIAMOND PLATE
DESIGNED TO SUPPORT 300 psf
36"x36" FRAME OPENING
EQUIPPED WITH: SLAM LOCK,
RECESSED LOCK BOX, FLUSH
MOUNT LIFT HANDLE, HOLD-
OPEN ARM, SS HARDWARE
AND HINGES

DOGHOUSE SIZE & LOCATION
MAY VARY UPON REQUEST

CALL FOR ADDITIONAL SPECS



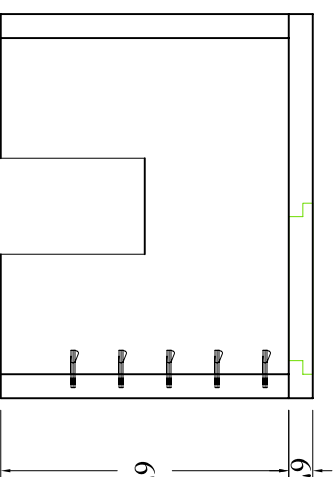
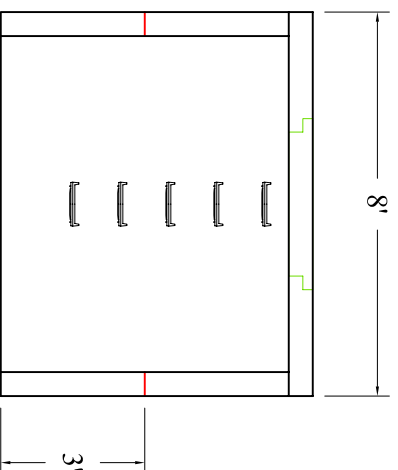
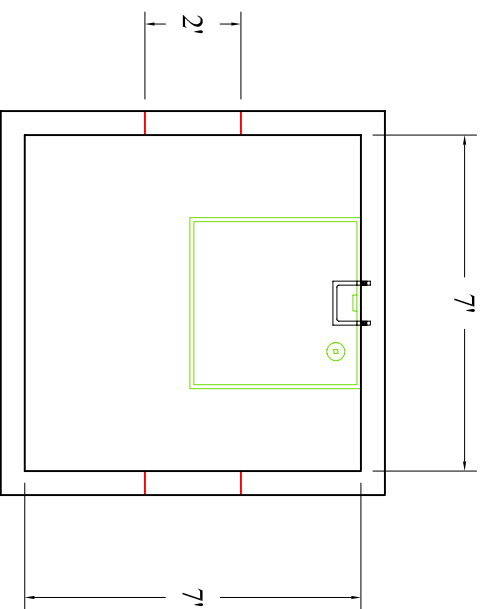
DRAWING INFORMATION

Drawn By: JIG
Checked By: CBC
Revision: 1
Date: 7/21/11

APPROVED BY: _____

print: _____

sign: _____



Scale: 1/4" = 1'



**BARTOW
PRECAST**

770.382.4462
sales@bartowprecast.com
WWW.BARTOWPRECAST.COM