

8'x7'x5' (ID) VAULT

SS120-50807
L0908-4848

PRODUCT INFORMATION

8'x7'x5' (ID)
UTILITY VAULT
VAULT = 12,000 #
LID = 4,300 #
**design may vary*

SPECIFICATIONS

MEETS ASTM C858 & C857
RATING: NON-TRAFFIC
CONCRETE TO BE 4,000 PSI
@ 28 DAYS
REINFORCING STEEL MEETS
ASTM A 615

10" STEPS ON 12" CENTERS
BUTYL SEALANT MEETING ASTM
C 990 TO BE USED ON JOINTS

ACCESS HATCH SHALL BE
FABRICATED WITH 1/4"
ALUMINUM DIAMOND PLATE
DESIGNED TO SUPPORT 300 psf
48"x48" FRAME OPENING
EQUIPPED WITH: SLAM LOCK,
PUSH MOUNT LIFT HANDLE,
HOLD-OPEN ARM, SS HARDWARE
AND HINGES

PENETRATIONS SIZE AND
LOCATION VARY PER JOB

CALL FOR ADDITIONAL SPECS



DRAWING INFORMATION

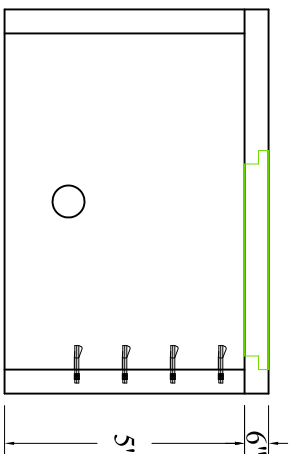
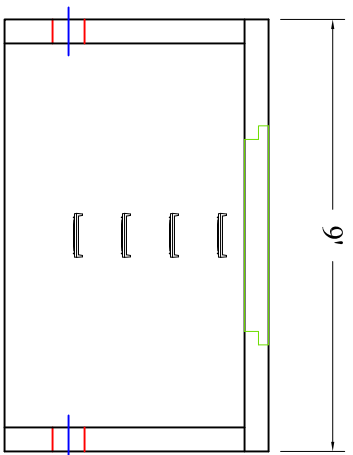
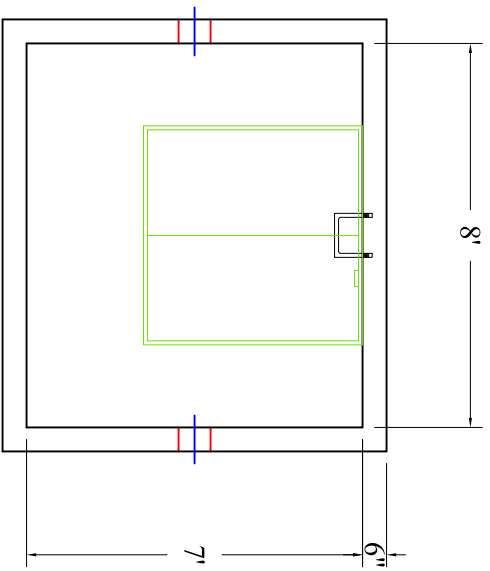
Drawn By: JIG
Checked By: CBC
Revision: 1
Date: 2/4/17

APPROVED BY: _____

print: _____

sign: _____

**actual dimensions may vary slightly*



Scale: 1/4" = 1'



BARTOW
PRECAST

770.382.4462
sales@bartowprecast.com
WWW.BARTOWPRECAST.COM