

**7'x6'x5' (ID) VAULT**

**SS120-50706**  
**L0807-4848**

**PRODUCT INFORMATION**

7'x6'x5' (ID)  
UTILITY VAULT  
VAULT = 10,500 #  
LID = 3,100 #  
*\*design may vary*

**SPECIFICATIONS**

MEETS ASTM C858 & C857  
RATING: NON-TRAFFIC  
CONCRETE TO BE 4,000 PSI  
@ 28 DAYS

REINFORCING STEEL MEETS  
ASTM A 615

10" STEPS ON 12" CENTERS

BUTYL SEALANT MEETING ASTM  
C 990 TO BE USED ON JOINTS

ACCESS HATCH SHALL BE  
FABRICATED WITH 1/4"  
ALUMINUM DIAMOND PLATE  
DESIGNED TO SUPPORT 300 psf  
48"x48" FRAME OPENING  
EQUIPPED WITH: SLAM LOCK,  
PUSH MOUNT LIFT HANDLE,  
HOLD-OPEN ARM, SS HARDWARE  
AND HINGES

PENETRATIONS SIZE AND  
LOCATION VARY PER JOB

CALL FOR ADDITIONAL SPECS



**DRAWING INFORMATION**

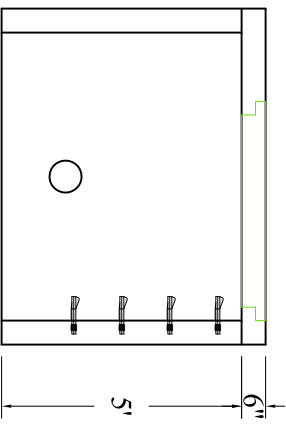
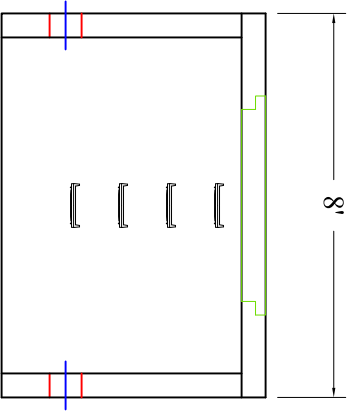
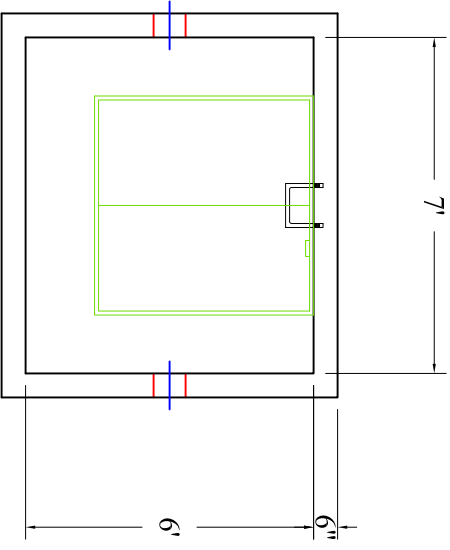
Drawn By: JIG  
Checked By: CBC  
Revision: 1  
Date: 2/4/17

APPROVED BY: \_\_\_\_\_

print: \_\_\_\_\_

sign: \_\_\_\_\_

*\*actual dimensions may vary slightly*



Scale: 1/4" = 1'



**BARTOW**  
**PRECAST**

**770.382.4462**  
sales@bartowprecast.com  
WWW.BARTOWPRECAST.COM