

## 6'x5'x6' (ID) SureSpec VAULT

SS120-60605  
L0706-3636 R

### PRODUCT INFORMATION

6'x5'x6' (ID)  
UTILITY VAULT  
VAULT = 10,800 #  
LID = 2,500 #

### SPECIFICATIONS

MEETS ASTM C858 & C857  
RATING: A-8 (H-10)  
CONCRETE TO BE 4,000 PSI  
@ 28 DAYS  
REINFORCING BAR MEETS  
ASTM A 615

10" STEPS ON 12" CENTERS  
BUTYL SEALANT MEETING ASTM  
C 990 TO BE USED ON JOINTS

ACCESS HATCH SHALL BE  
FABRICATED WITH 1/4"  
ALUMINUM DIAMOND PLATE  
DESIGNED TO SUPPORT 300 psf  
36"x36" FRAME OPENING  
EQUIPPED WITH: SLAM LOCK,  
RECESSED LOCK BOX, FLUSH  
MOUNT LIFT HANDLE, HOLD-  
OPEN ARM, SS HARDWARE  
AND HINGES

PENETRATIONS SIZE AND  
LOCATION VARY PER JOB

CALL FOR ADDITIONAL SPECS



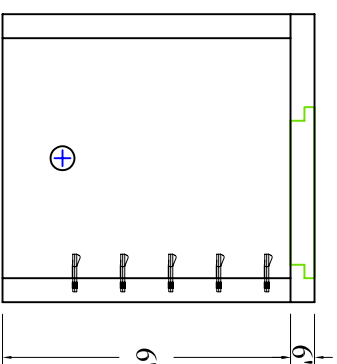
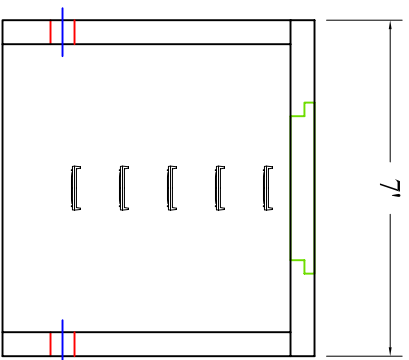
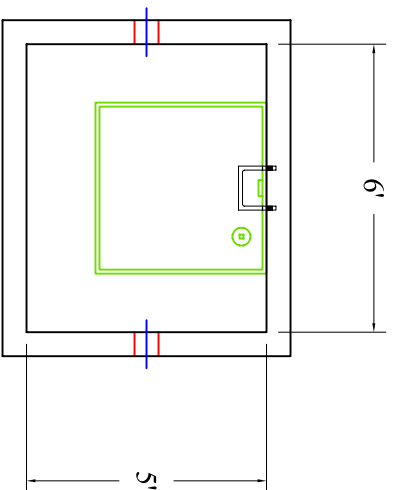
### DRAWING INFORMATION

Drawn By: CBC  
Checked By: JJG  
Revision: 1  
Date: 7/11/11

APPROVED BY: \_\_\_\_\_

print: \_\_\_\_\_

sign: \_\_\_\_\_



Scale: 1/4" = 1'



**BARTOW  
PRECAST**

770.382.4462  
sales@bartowprecast.com  
WWW.BARTOWPRECAST.COM