

4'X4'X5' (ID) VAULT

SS120-50404
L0505-3636

PRODUCT INFORMATION

4'x4'x5' (ID)
UTILITY VAULT
VAULT = 6,700 #
LID = 1,200 #
*design may vary

SPECIFICATIONS

MEETS ASTM C858 & C857

RATING: NON-TRAFFIC

CONCRETE TO BE 4,000 PSI
@ 28 DAYS

REINFORCING STEEL MEETS
ASTM A 615

10" STEPS ON 12" CENTERS

BUTYL SEALANT MEETING ASTM
C 990 TO BE USED ON JOINTS

ACCESS HATCH SHALL BE
FABRICATED WITH 1/4"
ALUMINUM DIAMOND PLATE
DESIGNED TO SUPPORT 300 psf
36"x36" FRAME OPENING
EQUIPPED WITH: SLAM LOCK,
FUSH MOUNT LIFT HANDLE,
HOLD-OPEN ARM, SS HARDWARE
AND HINGES

PENETRATIONS SIZE AND
LOCATION VARY PER JOB

CALL FOR ADDITIONAL SPECS



DRAWING INFORMATION

Drawn By: JIG
Checked By: CBC
Revision: 1
Date: 2/3/17

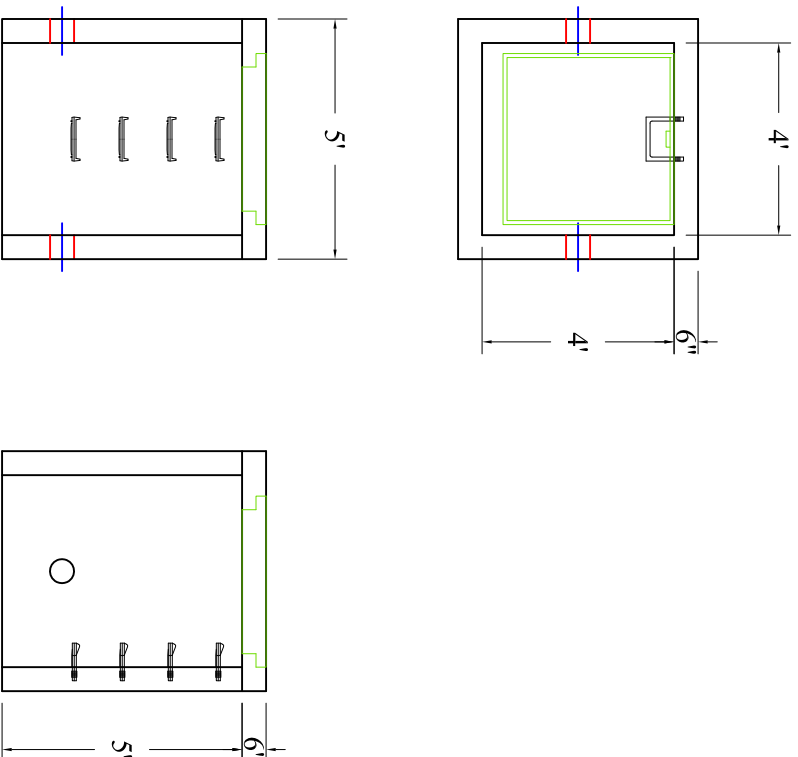
APPROVED BY: _____

print: _____

sign: _____

*actual dimensions may vary slightly

Scale: 1/4" = 1'



BARTOW PRECAST

770.382.4462
sales@bartowprecast.com
WWW.BARTOWPRECAST.COM