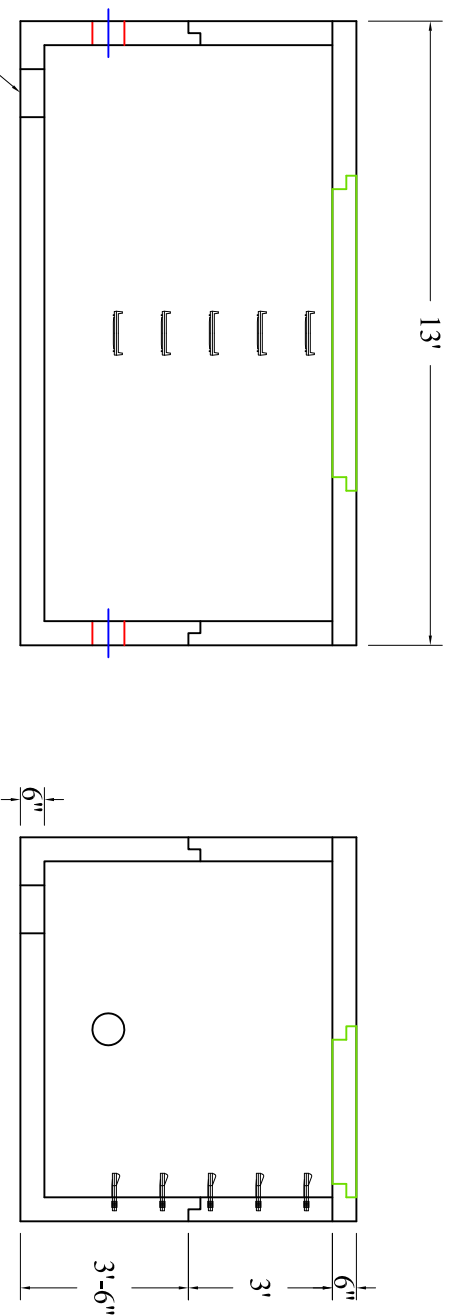
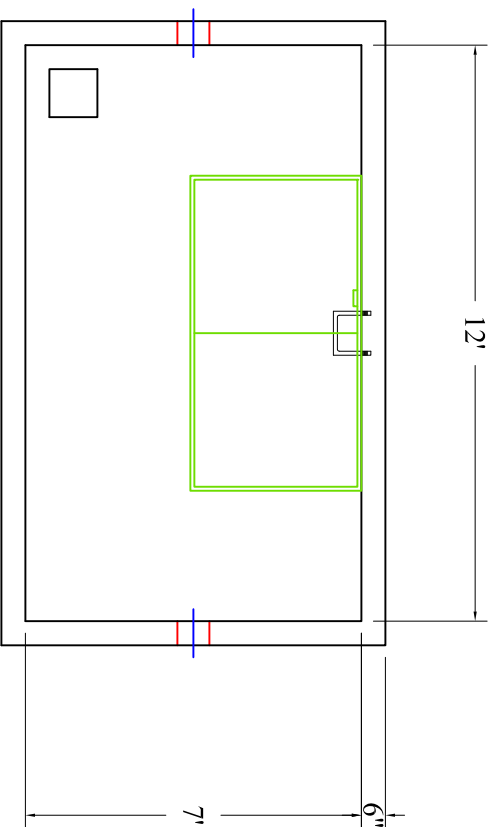


## 12'x7'x6' (ID) VAULT WITH FLOOR



Scale: 1/4" = 1'



**BARTOW  
PRECAST**

770.382.4462  
sales@bartowprecast.com  
WWW.BARTOWPRECAST.COM

SS120-61207 F  
L1308-7236

### PRODUCT INFORMATION

12'x7'x6' (ID)

UTILITY VAULT

BASE= 16,800 #

RISER= 9,000 # LID = 6,500 #

\*design may vary

### SPECIFICATIONS

MEETS ASTM C858 & C857

RATING: NON-TRAFFIC

CONCRETE TO BE 4,000 PSI  
@ 28 DAYS

REINFORCING STEEL MEETS  
ASTM A 615

10" STEPS ON 12" CENTERS

BUTYL SEALANT MEETING ASTM  
C 990 TO BE USED ON JOINTS

ACCESS HATCH SHALL BE  
FABRICATED WITH 1/4"  
ALUMINUM DIAMOND PLATE  
DESIGNED TO SUPPORT 300 psf  
72"x36" FRAME OPENING  
EQUIPPED WITH: SLAM LOCK,  
FLUSH MOUNT LIFT HANDLE,  
HOLD-OPEN ARM, SS HARDWARE  
AND HINGES

PENETRATIONS SIZE AND  
LOCATION VARY PER JOB

CALL FOR ADDITIONAL SPECS



### DRAWING INFORMATION

Drawn By: JIG

Checked By: CBC

Revision: 1

Date: 1/30/17

APPROVED BY:

print: \_\_\_\_\_

sign: \_\_\_\_\_

\*actual dimensions may vary slightly