

SEPTIC TANK 7,500 GALLON CAPACITY

MODEL: 110-07500

PRODUCT INFORMATION
7,500 GALLON
SEPTIC TANK

BASE= 29,300 # RISER= 19,500 #
LID= 16,500 # BAFFLE= 3,800 #
DESIGN MAY VARY

SPECIFICATIONS

MEETS ASTM C 1227

RATING: A-16 (H-20), ASSUME
4" MAX EARTH COVER WITH 3"
WATER TABLE BELOW GRADE

CONCRETE: 5,000 PSI @ 28 DAYS

STEEL REINFORCEMENT: MEETS
ASTM A 615, PLACEMENT AS
REQUIRED BY DESIGN

INLET & OUTLET BOOT MEETS
ASTM C 923, ACCEPTS 4" & 6" PVC

BUTYL SEALANT: MEETS ASTM
C 900, USED ON JOINTS

ACCESS OPENING SUITABLE FOR
24" RISER AND/OR RING & COVER
INTERNAL PIPING BY OTHERS
PER MUNICIPAL SPECS

MODIFICATION TO THIS DESIGN
AVAILABLE UPON REQUEST

CALL FOR ADDITIONAL SPECS



DRAWING INFORMATION

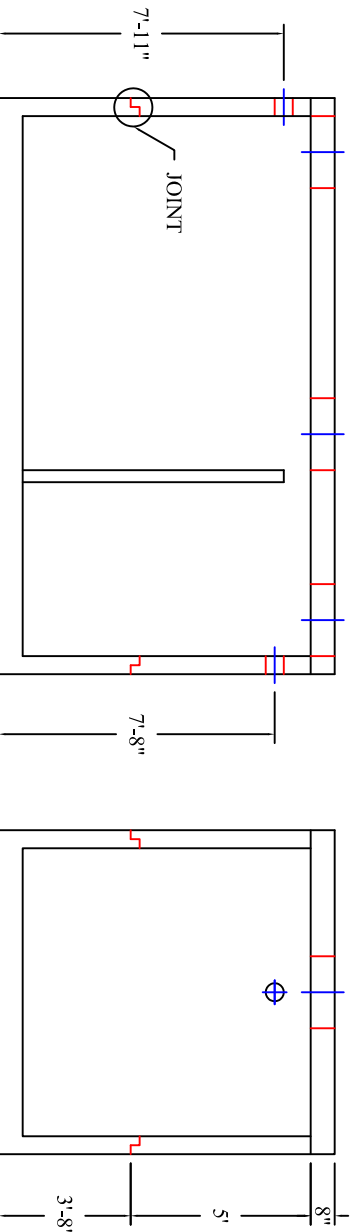
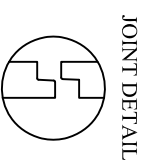
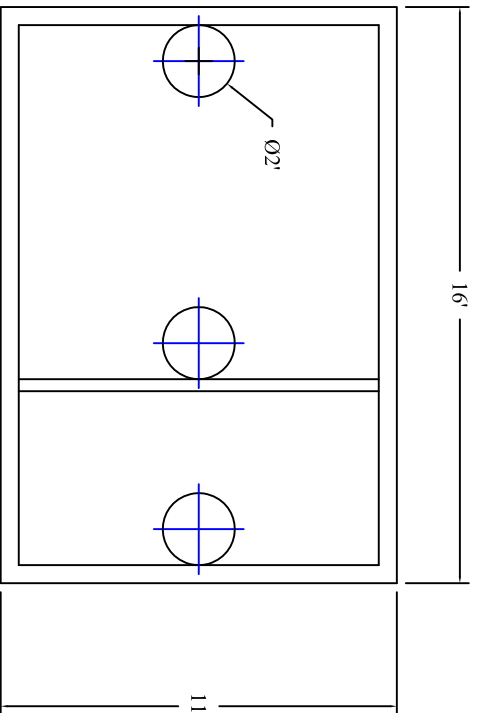
Drawn By: JIG
Checked By: CBC
Revision: 1
Date: 11/7/11

APPROVED BY: _____

print: _____

sign: _____

*actual dimensions may vary slightly



**BARTOW
PRECAST**

770.382.4462
sales@bartowprecast.com
WWW.BARTOWPRECAST.COM

Scale: 3/16" = 1'