

# SEPTIC TANK 6,500 GALLON CAPACITY

MODEL: 110-06500

## PRODUCT INFORMATION

6,500 GALLON  
SEPTIC TANK

TANK= 40,500 #    BAFFLE= 3,350 #  
LID= 16,500 #  
DESIGN MAY VARY

## SPECIFICATIONS

MEETS ASTM C 1227

RATING: A-16 (H-20), ASSUME  
4" MAX EARTH COVER WITH 3"  
WATER TABLE BELOW GRADE

CONCRETE: 5,000 PSI @ 28 DAYS

STEEL REINFORCEMENT: MEETS  
ASTM A 615, PLACEMENT AS  
REQUIRED BY DESIGN

INLET & OUTLET BOOT MEETS  
ASTM C 923, ACCEPTS 4" & 6" PVC

BUTYL SEALANT: MEETS ASTM  
C 900, USED ON JOINTS

ACCESS OPENING SUITABLE FOR  
24" RISER AND/OR RING & COVER

INTERNAL PIPING BY OTHERS  
PER MUNICIPAL SPECS

MODIFICATION TO THIS DESIGN  
AVAILABLE UPON REQUEST

CALL FOR ADDITIONAL SPECS



**NPPCA**  
CERTIFIED PLANT

## DRAWING INFORMATION

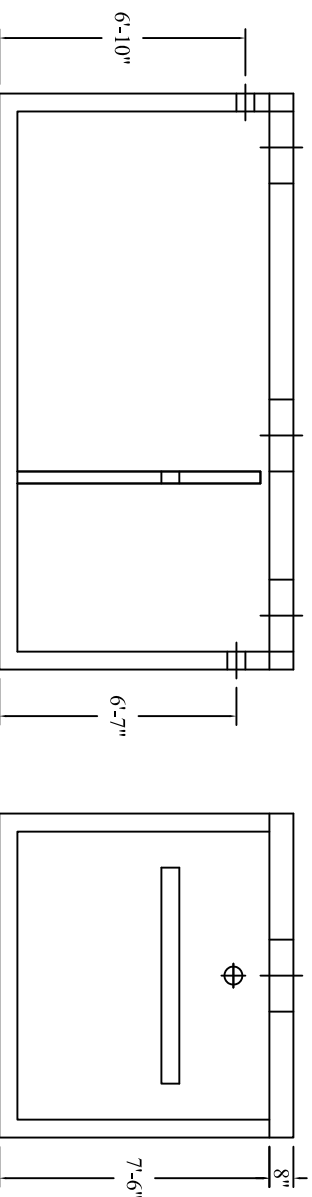
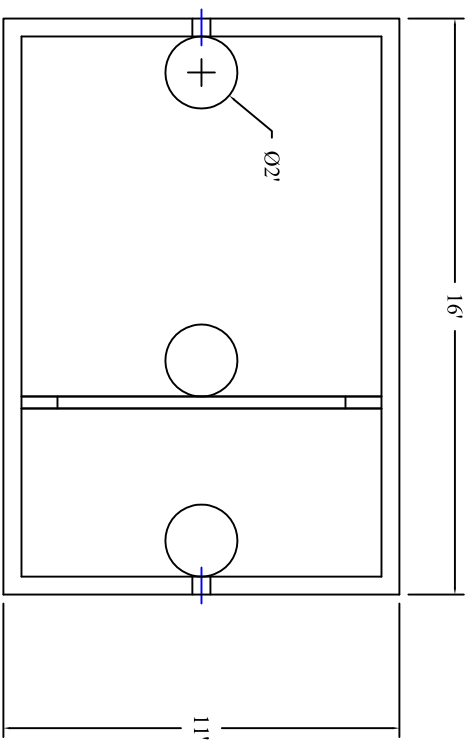
Drawn By:            CBC  
Checked By:             
Revision:             
Date:            2/7/17

APPROVED BY: \_\_\_\_\_

print: \_\_\_\_\_

sign: \_\_\_\_\_

\*actual dimensions may vary slightly



Scale: 3/16" = 1'



**BARTOW  
PRECAST**

770.382.4462  
sales@bartowprecast.com  
WWW.BARTOWPRECAST.COM