

SEPTIC TANK 6,000 GALLON CAPACITY

MODEL: 110-06000

PRODUCT INFORMATION

6,000 GALLON
SEPTIC TANK

TANK= 38,600 # BAFFLE= 3,100 #
LID= 16,500 #
DESIGN MAY VARY

SPECIFICATIONS

MEETS ASTM C 1227

RATING: A-16 (H-20), ASSUME
4" MAX EARTH COVER WITH 3"
WATER TABLE BELOW GRADE

CONCRETE: 5,000 PSI @ 28 DAYS

STEEL REINFORCEMENT: MEETS
ASTM A 615, PLACEMENT AS
REQUIRED BY DESIGN

INLET & OUTLET BOOT MEETS
ASTM C 923, ACCEPTS 4" & 6" PVC

BUTYL SEALANT: MEETS ASTM
C 900, USED ON JOINTS

ACCESS OPENING SUITABLE FOR
24" RISER AND/OR RING & COVER

INTERNAL PIPING BY OTHERS
PER MUNICIPAL SPECS

MODIFICATION TO THIS DESIGN
AVAILABLE UPON REQUEST

CALL FOR ADDITIONAL SPECS



DRAWING INFORMATION

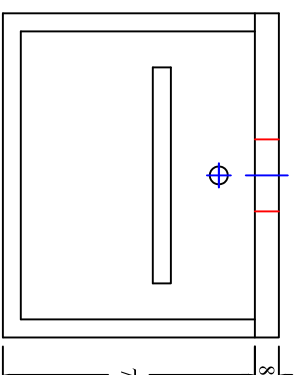
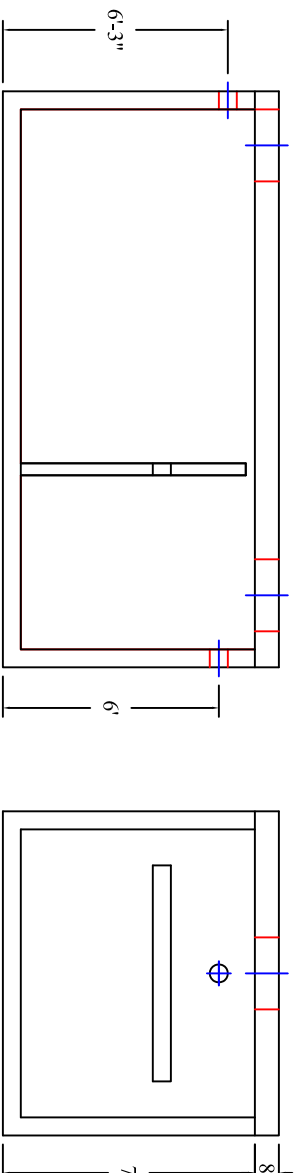
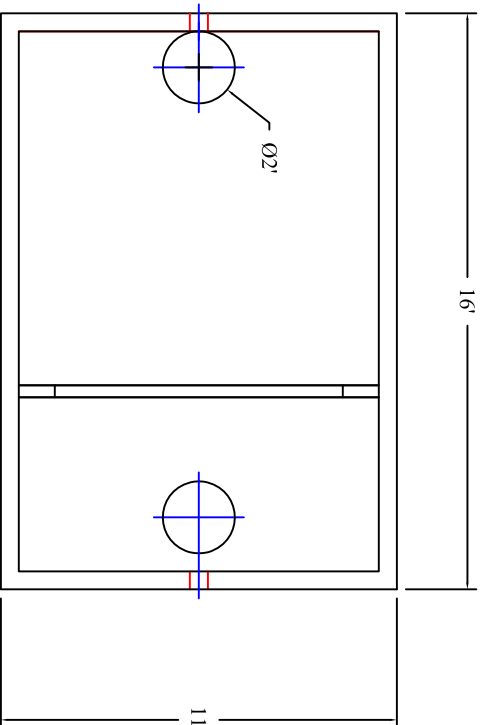
Drawn By: CBC
Checked By:
Revision:
Date: 2/7/17

APPROVED BY: _____

print: _____

sign: _____

*actual dimensions may vary slightly



**BARTOW
PRECAST**

Scale: 3/16" = 1'

770.382.4462

sales@bartowprecast.com

WWW.BARTOWPRECAST.COM