

# SEPTIC TANK 5,000 GALLON CAPACITY

MODEL: 110-05000

## PRODUCT INFORMATION

5,000 GALLON  
SEPTIC TANKS

TANK= 33,700 #    BAFFLE= 2,675 #  
LID= 12,750 #  
DESIGN MAY VARY

## SPECIFICATIONS

MEETS ASTM C 1227

RATING: A-16 (H-20), ASSUME  
4" MAX EARTH COVER WITH 3"  
WATER TABLE BELOW GRADE

CONCRETE: 5,000 PSI @ 28 DAYS

STEEL REINFORCEMENT: MEETS  
ASTM A 615, PLACEMENT AS  
REQUIRED BY DESIGN

INLET & OUTLET BOOT MEETS  
ASTM C 923, ACCEPTS 4" & 6" PVC

BUTYL SEALANT: MEETS ASTM  
C 900, USED ON JOINTS

ACCESS OPENING SUITABLE FOR  
24" RISER AND/OR RING & COVER

INTERNAL PIPING BY OTHERS  
PER MUNICIPAL SPECS

MODIFICATION TO THIS DESIGN  
AVAILABLE UPON REQUEST

CALL FOR ADDITIONAL SPECS



## DRAWING INFORMATION

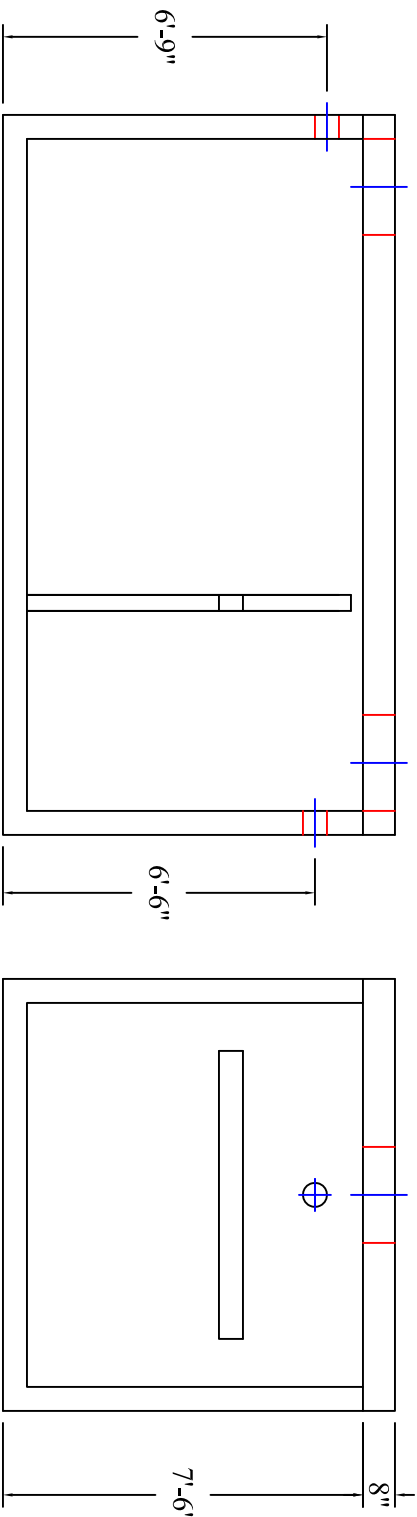
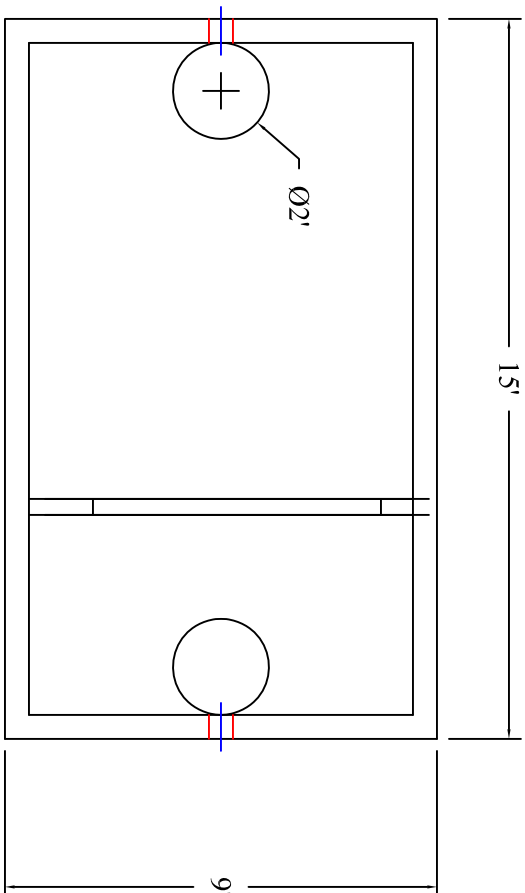
Drawn By:            CBC  
Checked By:             
Revision:             
Date:            2/7/17

APPROVED BY: \_\_\_\_\_

print: \_\_\_\_\_

sign: \_\_\_\_\_

\*actual dimensions may vary slightly



Scale: 1/4" = 1'



**BARTOW  
PRECAST**

770.382.4462  
sales@bartowprecast.com  
WWW.BARTOWPRECAST.COM