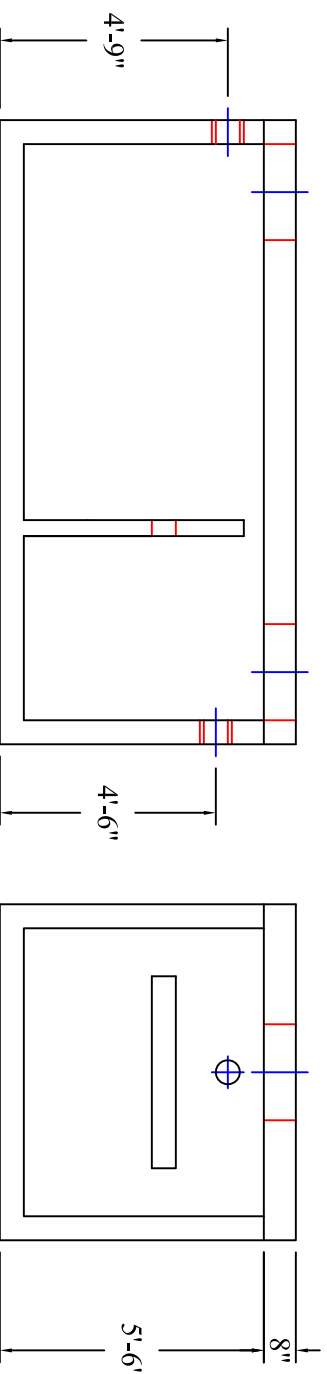
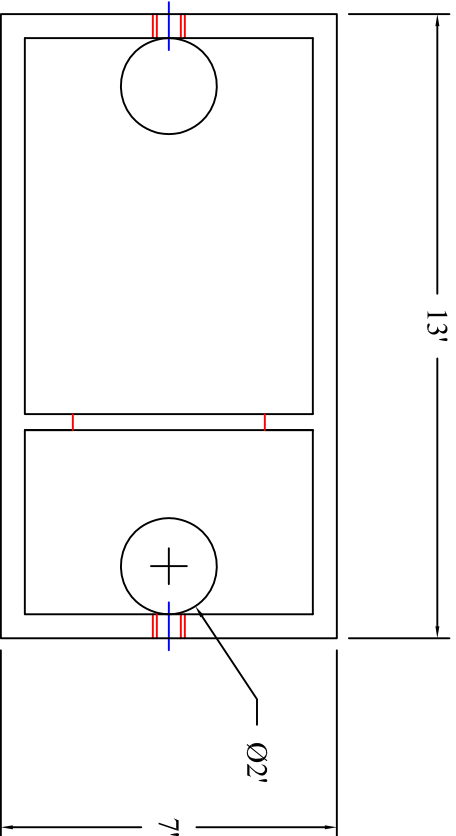


# SEPTIC TANK 2,000 GALLON CAPACITY



MODEL: 110-02000

**PRODUCT INFORMATION**  
2,000 GALLON  
SEPTIC TANK

TANK = 21,200#  
LID = 8,800# BAFLE = 1,400#  
DESIGN MAY VARY

**SPECIFICATIONS**  
MEETS ASTM C 1227

RATING: NON-TRAFFIC  
CONCRETE: 4,000 PSI @ 28 DAYS

STEEL REINFORCEMENT: MEETS  
ASTM A 615, PLACEMENT AS  
REQUIRED BY DESIGN

INLET & OUTLET BOOT MEETS  
ASTM C 923, ACCEPTS 4" & 6" PVC  
BUTYL SEALANT: MEETS ASTM  
C 900, USED ON JOINTS

ACCESS OPENING SUITABLE FOR  
24" RISER AND/OR RING & COVER



**DRAWING INFORMATION**

Drawn By:            CBC  
Checked By:             
Revision:             
Date:            2/7/17

APPROVED BY:           

print:             
sign:           

\*actual dimensions may vary slightly



**BARTOW  
PRECAST**

770.382.4462  
sales@bartowprecast.com  
WWW.BARTOWPRECAST.COM

Scale: 1/4" = 1'