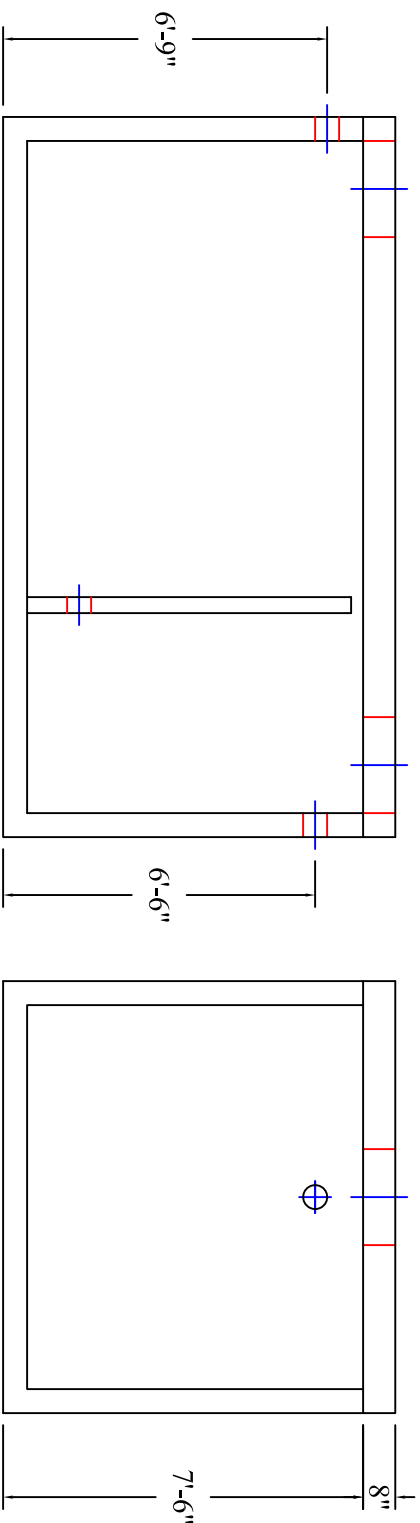
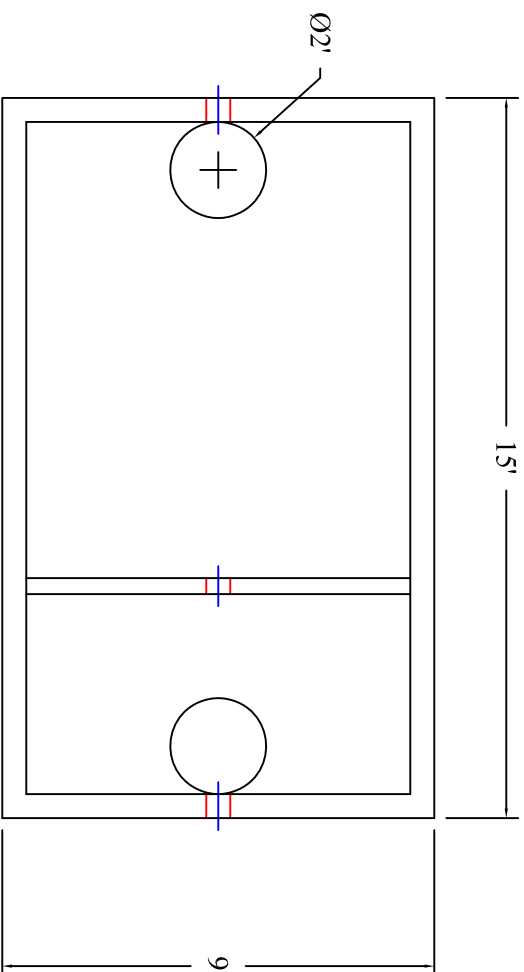


GREASE INTERCEPTOR 5,000 GALLON CAPACITY



MODEL: GI 5000 / 181

PRODUCT INFORMATION

5,000 GALLON
GREASE INTERCEPTOR

BASE= 20,475 # RISER= 13,200 #
LID= 12,750 # BAFFLE= 2,675 #
DESIGN MAY VARY

SPECIFICATIONS

MEETS ASTM C 1613

RATING: A-16 (H-20), ASSUME
4" MAX EARTH COVER WITH 3'
WATER TABLE BELOW GRADE

CONCRETE: 5,000 PSI @ 28 DAYS

STEEL REINFORCEMENT: MEETS
ASTM A 615, PLACEMENT AS
REQUIRED BY DESIGN

INLET & OUTLET BOOT MEETS
ASTM C 923, ACCEPTS 4" & 6" PVC

BUTYL SEALANT: MEETS ASTM
C 900, USED ON JOINTS

ACCESS OPENING SUITABLE FOR
24" RISER AND/OR RING & COVER

INTERNAL PIPING BY OTHERS
PER MUNICIPAL SPECS

MODIFICATION TO THIS DESIGN
AVAILABLE UPON REQUEST

CALL FOR ADDITIONAL SPECS



DRAWING INFORMATION

Drawn By: JIG
Checked By: CBC
Revision: 1
Date: 9/6/11

APPROVED BY:

print: _____

sign: _____

*actual dimensions may vary slightly



**BARTOW
PRECAST**

770.382.4462
sales@bartowprecast.com
WWW.BARTOWPRECAST.COM

Scale: 1/4" = 1'