

# Glynn Co - Brunswick Joint Water & Sewer Commission 2,500 Gallon Grease Interceptor

MODEL: GI 2500/189

## PRODUCT INFORMATION

2,500 GALLON  
GREASE INTERCEPTOR

TANK= 20,700# (LW)  
LID= 8,500 # BAFFLE= 1,700 #  
DESIGN MAY VARY

## SPECIFICATIONS

MEETS ASTM C 1613

RATING: A-16 (H-20), ASSUME  
4" MAX EARTH COVER WITH 3"  
WATER TABLE BELOW GRADE

CONCRETE: 5,000 PSI @ 28 DAYS

STEEL REINFORCEMENT: MEETS  
ASTM A 615, PLACEMENT AS  
REQUIRED BY DESIGN

INLET & OUTLET BOOT MEETS  
ASTM C 923, ACCEPTS 4" & 6" PVC  
BUTYL SEALANT: MEETS ASTM  
C 900, USED ON JOINTS

ACCESS OPENING SUITABLE FOR  
24" RISER AND/OR RING & COVER

INTERNAL PIPING BY OTHERS  
PER MUNICIPAL SPECS, INCLUDE  
POLYLOK PL 625 OUTLET FILTER  
CROSSOVER TO BE 6" PVC

TANK COATED WITH CONSEAL  
CS-55: BLACK EXTERIOR, WHITE  
INTERIOR



## DRAWING INFORMATION

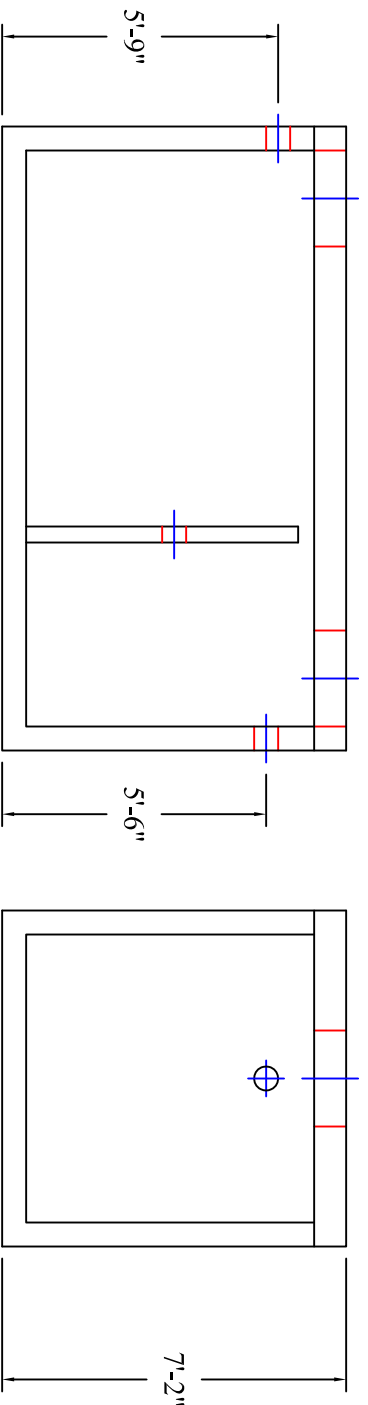
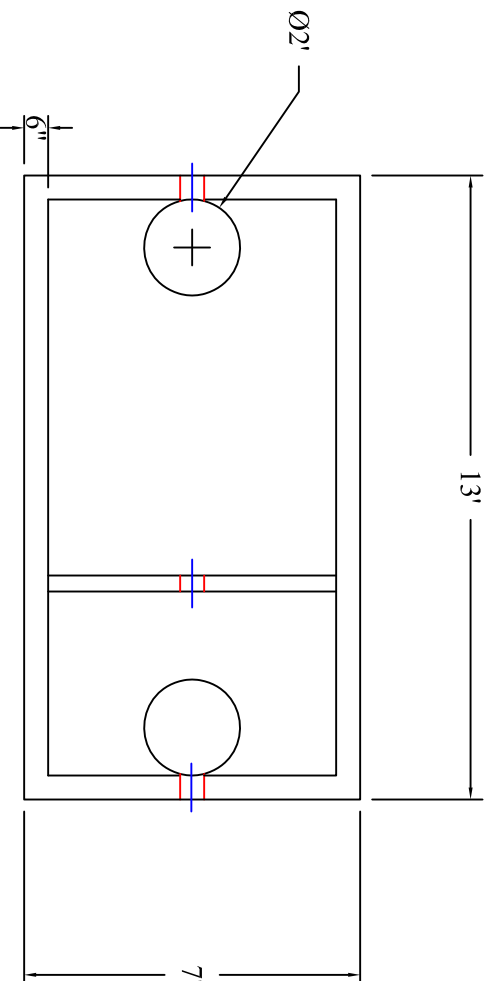
Drawn By: CBC  
Checked By: \_\_\_\_\_  
Revision: 1  
Date: 11/22/16

APPROVED BY: \_\_\_\_\_

print: \_\_\_\_\_

sign: \_\_\_\_\_

\*actual dimensions may vary slightly



Scale: 1/4" = 1'



**BARTOW  
PRECAST**

770.382.4462  
sales@bartowprecast.com  
WWW.BARTOWPRECAST.COM