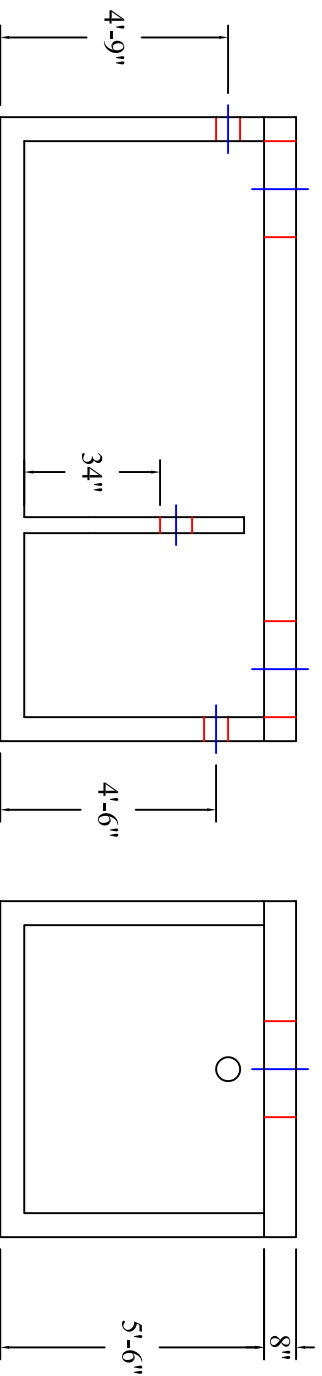
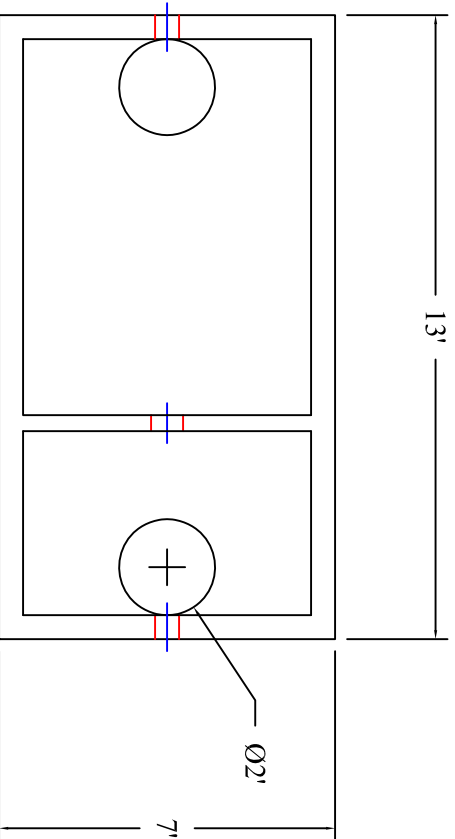


DeKalb County 2,000 Gallon Grease Interceptor



MODEL: GI 2000/186

PRODUCT INFORMATION
2,000 GALLON
GREASE INTERCEPTOR

TANK= 21,170 #
LID= 8,000 # BARTOW PRECAST #
DESIGN MAY VARY

SPECIFICATIONS
MEETS ASTM C 1613

RATING: A-16 (H-20), ASSUME
4" MAX EARTH COVER WITH 3"
WATER TABLE BELOW GRADE

CONCRETE: 5,000 PSI @ 28 DAYS

STEEL REINFORCEMENT: MEETS
ASTM A 615, PLACEMENT AS
REQUIRED BY DESIGN

INLET & OUTLET BOOT MEETS
ASTM C 923, ACCEPTS 4" & 6" PVC

BUTYL SEALANT: MEETS ASTM
C 900, USED ON JOINTS

ACCESS OPENING SUITABLE FOR
24" RISER AND/OR RING & COVER

INTERNAL PIPING BY OTHERS
PER MUNICIPAL SPECS

BAFFLE CROSSOVER TO BE 8"
PVC

CALL FOR ADDITIONAL SPECS



DRAWING INFORMATION

Drawn By: JIG
Checked By: CBC
Revision: 1
Date: 10/1/12

APPROVED BY: _____

print: _____

sign: _____

*actual dimensions may vary slightly



**BARTOW
PRECAST**

770.382.4462
sales@bartowprecast.com
WWW.BARTOWPRECAST.COM

Scale: 1/4" = 1'