

Glynn Co - Brunswick Joint Water & Sewer Commission 2,000 Gallon Grease Interceptor

MODEL: GI 2000/185

PRODUCT INFORMATION

2,000 GALLON
GREASE INTERCEPTOR

TANK= 21,170 # BAFFLE= 1,400 #
LID= 8,000 #
DESIGN MAY VARY

SPECIFICATIONS

MEETS ASTM C 1613

RATING: A-16 (H-20), ASSUME
4" MAX EARTH COVER WITH 3'
WATER TABLE BELOW GRADE

CONCRETE: 5,000 PSI @ 28 DAYS

STEEL REINFORCEMENT: MEETS
ASTM A 615, PLACEMENT AS
REQUIRED BY DESIGN

INLET & OUTLET BOOT MEETS
ASTM C 923, ACCEPTS 4" & 6" PVC

BUTYL SEALANT: MEETS ASTM
C 900, USED ON JOINTS

ACCESS OPENING SUITABLE FOR
24" RISER AND/OR RING & COVER

INTERNAL PIPING BY OTHERS
PER MUNICIPAL SPECS, INCLUDE
POLYLOK PL 625 OUTLET FILTER

TANK COATED WITH CONSEAL,
CS-55: BLACK EXTERIOR, WHITE
INTERIOR



NPCEA
CERTIFIED PLANT

DRAWING INFORMATION

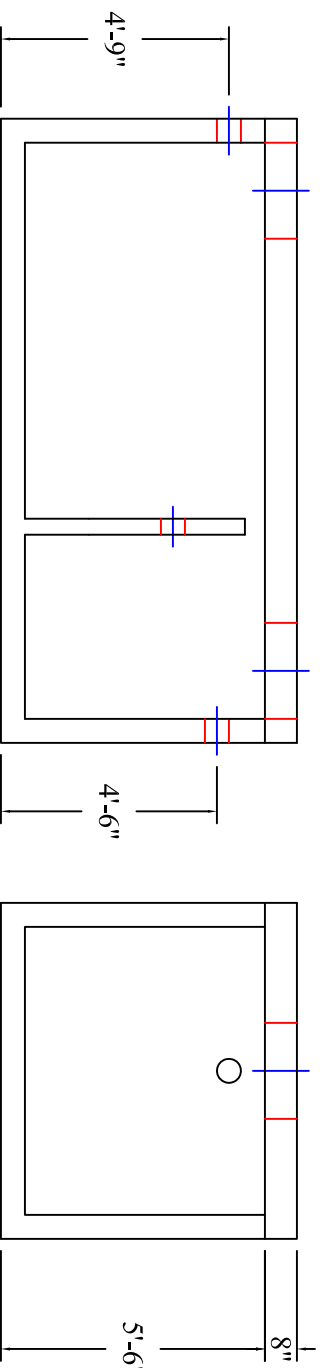
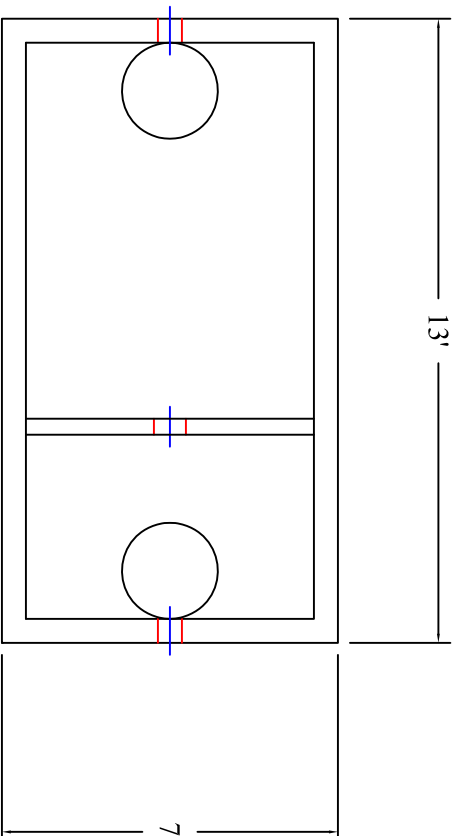
Drawn By: CBC
Checked By: 1
Revision: 1
Date: 11/22/16

APPROVED BY: _____

print: _____

sign: _____

*actual dimensions may vary slightly



BARTOW
PRECAST

770.382.4462
sales@bartowprecast.com
WWW.BARTOWPRECAST.COM