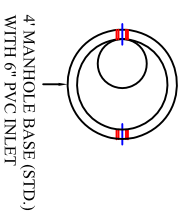
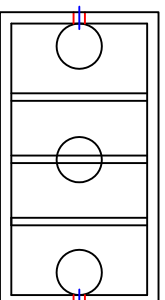
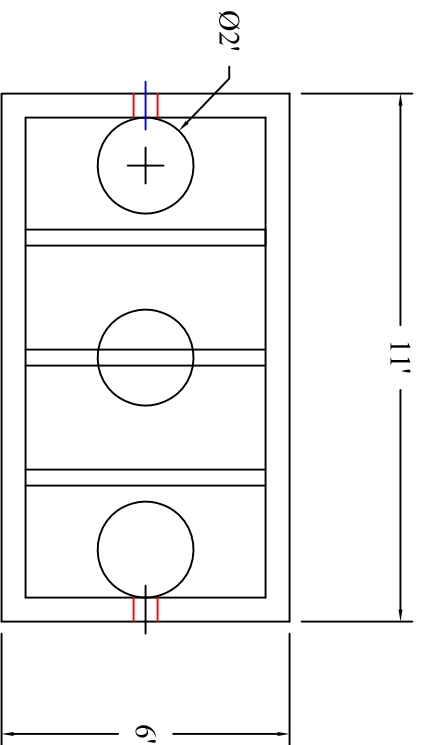
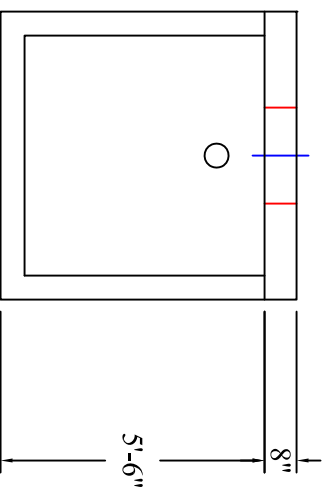
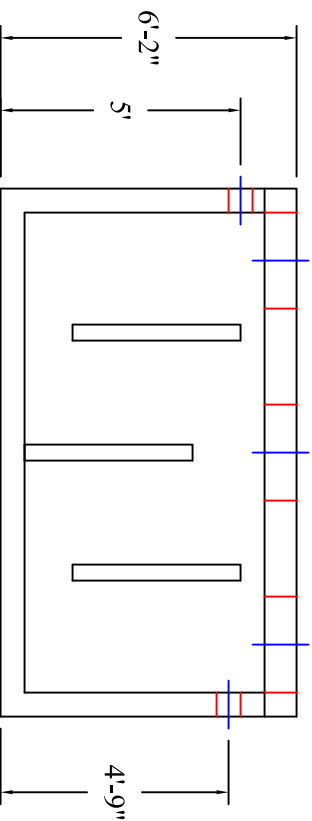


# Etowah Water & Sewer Authority 1,500 Gallon Grease Interceptor



PLAN VIEW with 4' MANHOLE



MODEL: GI 1500/384

## PRODUCT INFORMATION

1,500 GALLON  
GREASE INTERCEPTOR

TANK= 17,700# (L/W)  
LID= 4,100# BAFILES= 1,000# (ea.)  
DESIGN MAY VARY

## SPECIFICATIONS

MEETS ASTM C 1613

RATING: A-16 (H-20), ASSUME  
4" MAX EARTH COVER WITH 3"  
WATER TABLE BELOW GRADE  
CONCRETE: 5,000 PSI @ 28 DAYS

STEEL REINFORCEMENT: MEETS  
ASTM A 615, PLACEMENT AS  
REQUIRED BY DESIGN

INLET & OUTLET BOOT MEETS  
ASTM C 923, ACCEPTS 4" & 6" PVC

BUTYL SEALANT: MEETS ASTM  
C 900, USED ON JOINTS

ACCESS OPENING SUITABLE FOR  
24" RISER AND/OR RING & COVER  
INTERNAL PIPING BY OTHERS  
PER MUNICIPAL SPECS



## DRAWING INFORMATION

Drawn By: CBC  
Checked By: \_\_\_\_\_  
Revision: \_\_\_\_\_  
Date: 3/30/17

APPROVED BY: \_\_\_\_\_

print: \_\_\_\_\_

sign: \_\_\_\_\_

\*actual dimensions may vary slightly



**BARTOW  
PRECAST**

Scale: 1/4" = 1'

770.382.4462

sales@bartowprecast.com  
WWW.BARTOWPRECAST.COM