

# Peachtree City

MODEL: GI 1000/384

## PRODUCT INFORMATION

1,000 GALLON  
GREASE INTERCEPTOR

TANK = 15,300 # LID = 4,600 #  
BAFFLES = 1,000 #'s each  
DESIGN MAY VARY

## SPECIFICATIONS

MEETS ASTM C 1613

RATING: A-16 (H-20), ASSUME  
4" MAX EARTH COVER WITH 3"  
WATER TABLE BELOW GRADE

CONCRETE: 5,000 PSI @ 28 DAYS

STEEL REINFORCEMENT: MEETS  
ASTM A 615, PLACEMENT AS  
REQUIRED BY DESIGN

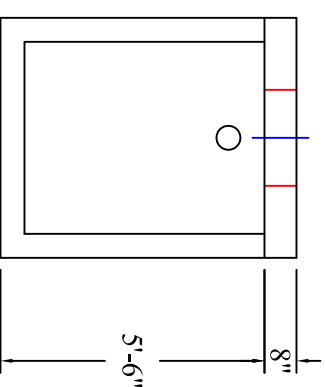
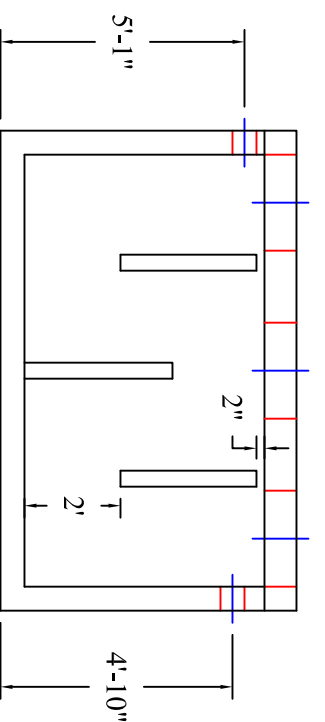
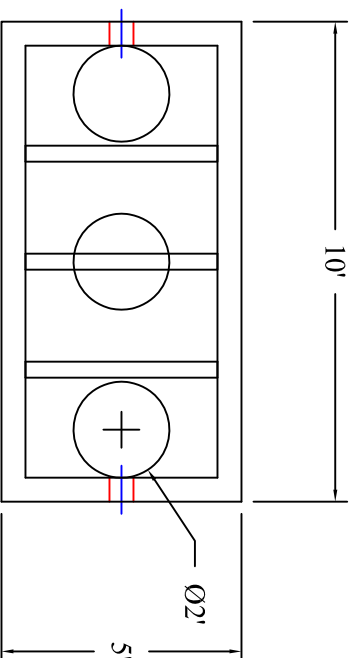
INLET & OUTLET BOOT MEETS  
ASTM C 923, ACCEPTS 4" & 6" PVC

BUTYL SEALANT: MEETS ASTM  
C 900, USED ON JOINTS

ACCESS OPENING SUITABLE FOR  
24" RISER AND/OR RING & COVER  
INTERNAL PIPING BY OTHERS  
PER MUNICIPAL SPECS

MODIFICATION TO THIS DESIGN  
AVAILABLE UPON REQUEST

CALL FOR ADDITIONAL SPECS



Scale: 1/4" = 1'



**BARTOW  
PRECAST**

770.382.4462  
sales@bartowprecast.com  
WWW.BARTOWPRECAST.COM



## DRAWING INFORMATION

Drawn By:            CBC  
Checked By:             
Revision:             
Date:            2/3/17

APPROVED BY:           

print:           

sign:           

\*actual dimensions may vary slightly