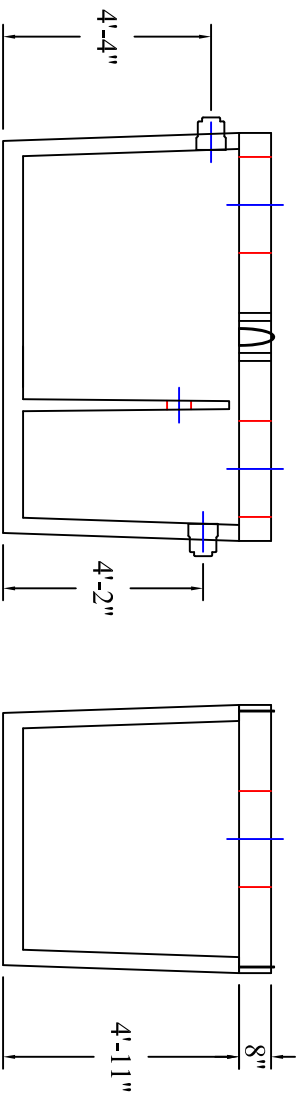
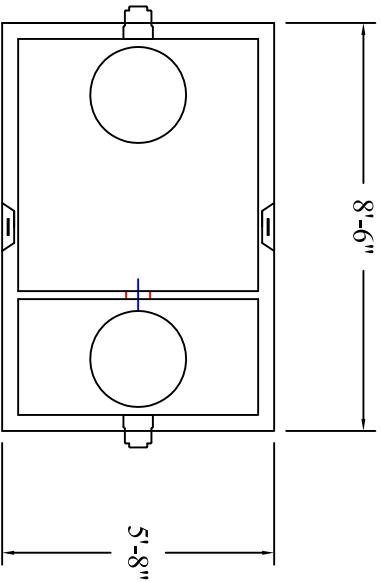


# Dalton Utilities 1,000 Gallon Grease Interceptor



MODEL: 111-01032

## PRODUCT INFORMATION

1,000 GALLON  
GREASE INTERCEPTOR

TANK = 9,500 #  
LID = 4,200 #  
DESIGN MAY VARY

## SPECIFICATIONS

MEETS ASTM C 1613

RATING: A-16 (H-20), ASSUME  
4" MAX EARTH COVER WITH 3"  
WATER TABLE BELOW GRADE

CONCRETE: 5,000 PSI @ 28 DAYS

STEEL REINFORCEMENT: MEETS  
ASTM A 615, PLACEMENT AS  
REQUIRED BY DESIGN

INLET & OUTLET BOOT MEETS  
ASTM C 923, ACCEPTS 4" & 6" PVC

BUTYL SEALANT: MEETS ASTM  
C 900, USED ON JOINTS

ACCESS OPENING SUITABLE FOR  
24" RISER AND/OR RING & COVER

INTERNAL PIPING BY OTHERS  
PER MUNICIPAL SPECS

CROSSOVER TO BE 6" PVC

CALL FOR ADDITIONAL SPECS



## DRAWING INFORMATION

Drawn By: JJG  
Checked By: \_\_\_\_\_  
Revision: 1  
Date: 10/17/16

APPROVED BY: \_\_\_\_\_

print: \_\_\_\_\_

sign: \_\_\_\_\_

\*actual dimensions may vary slightly



# BARTOW PRECAST

770.382.4462  
sales@bartowprecast.com  
WWW.BARTOWPRECAST.COM

Scale: 1/4" = 1'