

Glynn Co - Brunswick Joint Water & Sewer Commission 1,000 Gallon Grease Interceptor

MODEL: 111-01033

PRODUCT INFORMATION

1,000 GALLON
GREASE INTERCEPTOR

TANK = 9,500 #
LID = 4,200 #
DESIGN MAY VARY

SPECIFICATIONS

MEETS ASTM C 1613

RATING: A-16 (H-20), ASSUME
4" MAX EARTH COVER WITH 3"
WATER TABLE BELOW GRADE

CONCRETE: 5,000 PSI @ 28 DAYS

STEEL REINFORCEMENT: MEETS
ASTM A 615, PLACEMENT AS
REQUIRED BY DESIGN

INLET & OUTLET BOOT MEETS
ASTM C 923, ACCEPTS 4" & 6" PVC

BUTYL SEALANT: MEETS ASTM
C 900, USED ON JOINTS

ACCESS OPENING SUITABLE FOR
24" RISER AND/OR RING & COVER

INTERNAL PIPING BY OTHERS
PER MUNICIPAL SPECS, INCLUDE
POLYLOK PL625 OUTLET FILTER

CROSSOVER TO BE 6" PVC

TANK COATED WITH CONSEAL
CS-55: BLACK EXTERIOR, WHITE
INTERIOR



DRAWING INFORMATION

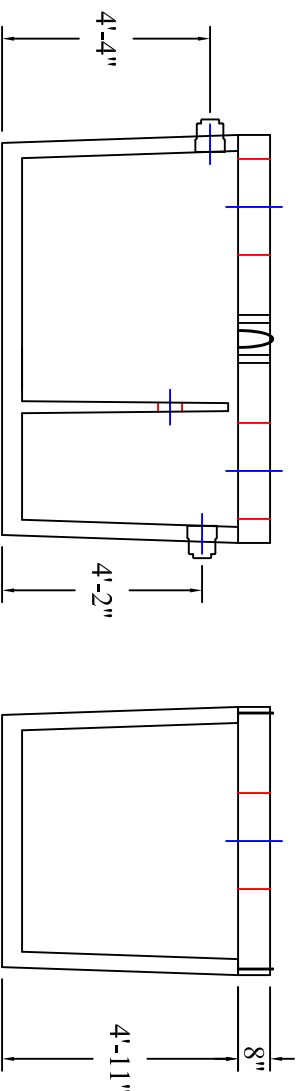
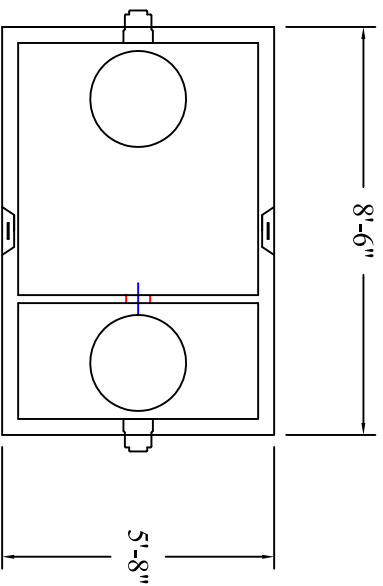
Drawn By: CBC
Checked By:
Revision:
Date: 11/22/16

APPROVED BY:

print:

sign:

*actual dimensions may vary slightly



Scale: 1/4" = 1'



**BARTOW
PRECAST**

770.382.4462
sales@bartowprecast.com
WWW.BARTOWPRECAST.COM