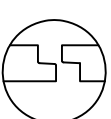
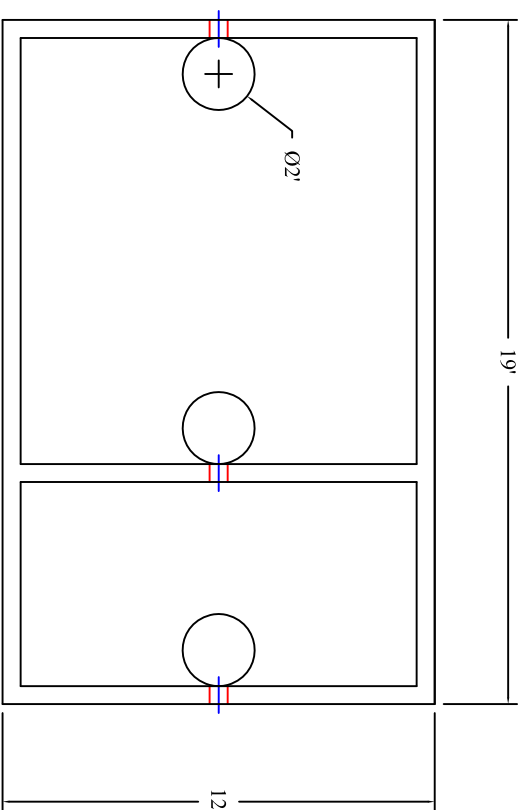
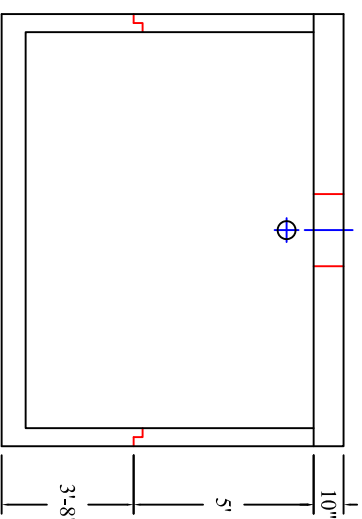
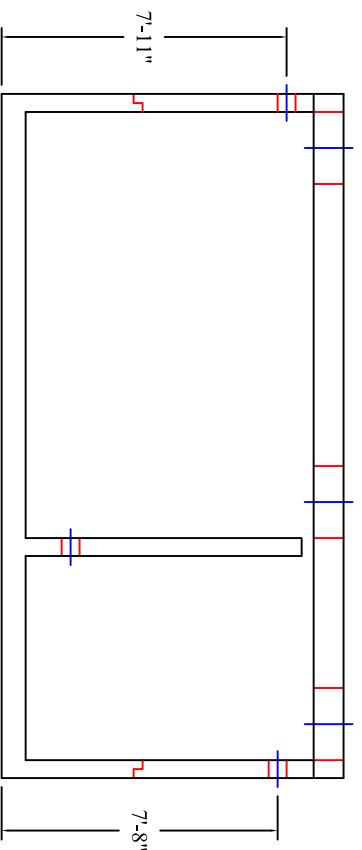


# GREASE INTERCEPTOR 10,000 GALLON CAPACITY



JOINT DETAIL



MODEL: GI 10000 / 181

## PRODUCT INFORMATION

10,000 GALLON  
GREASE INTERCEPTOR

BASE= 38,700 # RISER= 26,400 #  
LID= 26,850 #  
DESIGN MAY VARY

## SPECIFICATIONS

MEETS ASTM C 1613

RATING: A-16 (H-20), ASSUME  
4" MAX EARTH COVER WITH 3"  
WATER TABLE BELOW GRADE

CONCRETE: 5,000 PSI @ 28 DAYS

STEEL REINFORCEMENT: MEETS  
ASTM A 615, PLACEMENT AS  
REQUIRED BY DESIGN

INLET & OUTLET BOOT MEETS  
ASTM C 923, ACCEPTS 4" & 6" PVC

BUTYL SEALANT: MEETS ASTM  
C 900, USED ON JOINTS

ACCESS OPENING SUITABLE FOR  
24" RISER AND/OR RING & COVER

INTERNAL PIPING BY OTHERS  
PER MUNICIPAL SPECS

MODIFICATION TO THIS DESIGN  
AVAILABLE UPON REQUEST

CALL FOR ADDITIONAL SPECS



## DRAWING INFORMATION

Drawn By: JIG  
Checked By: CBC  
Revision: 1  
Date: 9/8/11

APPROVED BY: \_\_\_\_\_

print: \_\_\_\_\_

sign: \_\_\_\_\_

\*actual dimensions may vary slightly



**BARTOW  
PRECAST**

770.382.4462  
sales@bartowprecast.com  
WWW.BARTOWPRECAST.COM