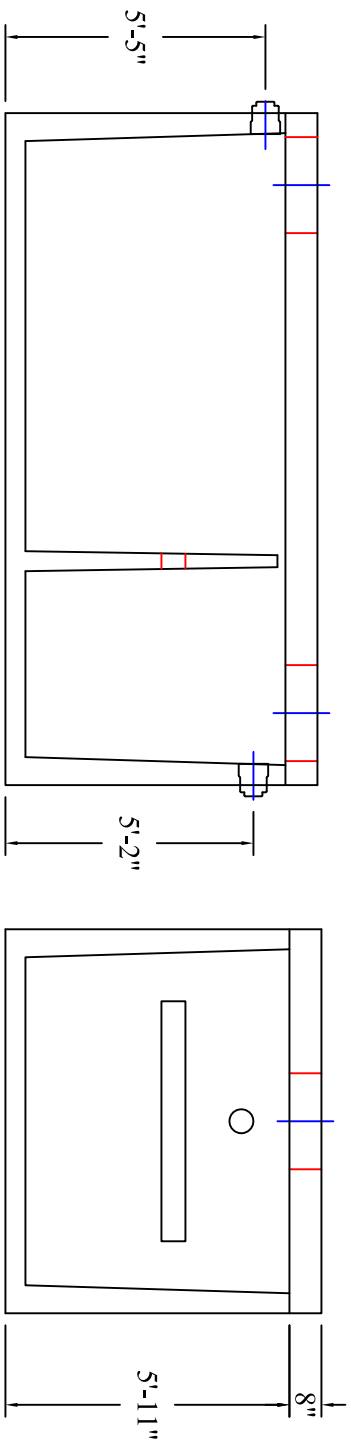
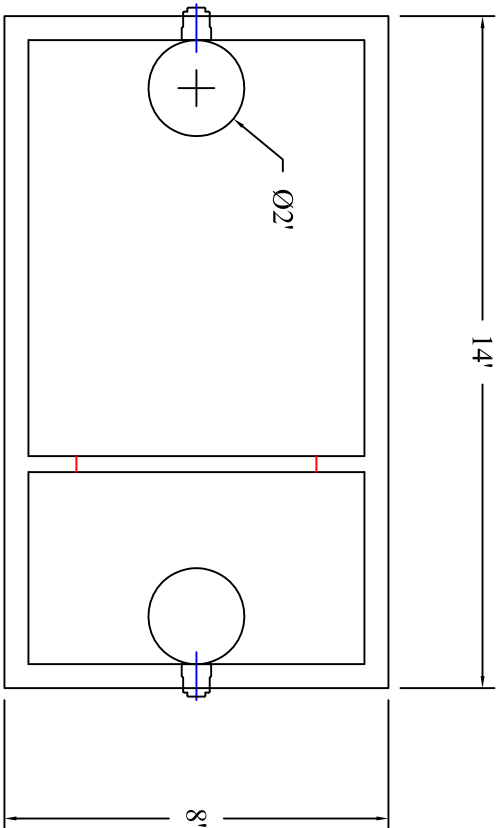


SEPTIC TANK 3,000 GALLON CAPACITY



MODEL: 110-03000

PRODUCT INFORMATION

3,000 GALLON
SEPTIC TANK

TANK = 26,400
LID = 11,000#
DESIGN MAY VARY

SPECIFICATIONS

MEETS ASTM C 1227

RATING: A-16 (H-20), ASSUME
4" MAX EARTH COVER WITH 3"
WATER TABLE BELOW GRADE

CONCRETE: 5,000 PSI @ 28 DAYS

STEEL REINFORCEMENT: MEETS
ASTM A 615, PLACEMENT AS
REQUIRED BY DESIGN

INLET & OUTLET BOOT MEETS
ASTM C 923, ACCEPTS 4" & 6" PVC

BUTYL SEALANT: MEETS ASTM
C 900, USED ON JOINTS

ACCESS OPENING SUITABLE FOR
24" RISER AND/OR RING & COVER

INTERNAL PIPING BY OTHERS
PER MUNICIPAL SPECS

CALL FOR ADDITIONAL SPECS



DRAWING INFORMATION

Drawn By: JJG
Checked By: _____
Revision: 1
Date: 12/18/18

APPROVED BY: _____

print: _____

sign: _____

*actual dimensions may vary slightly



**BARTOW
PRECAST**

770.382.4462
sales@bartowprecast.com
WWW.BARTOWPRECAST.COM

Scale: 1/4" = 1'