

Dekalb County 3,000 Gallon Grease Interceptor

MODEL: 110-03036

PRODUCT INFORMATION

3,000 GALLON
GREASE INTERCEPTOR

TANK= 25,800 # LID= 10,350#
BAFLE= 1,800
DESIGN MAY VARY

SPECIFICATIONS

MEETS ASTM C 1613

RATING: A-16 (H-20), ASSUME
4" MAX EARTH COVER WITH 3'
WATER TABLE BELOW GRADE

CONCRETE: 5,000 PSI @ 28 DAYS

STEEL REINFORCEMENT: MEETS
ASTM A 615, PLACEMENT AS
REQUIRED BY DESIGN

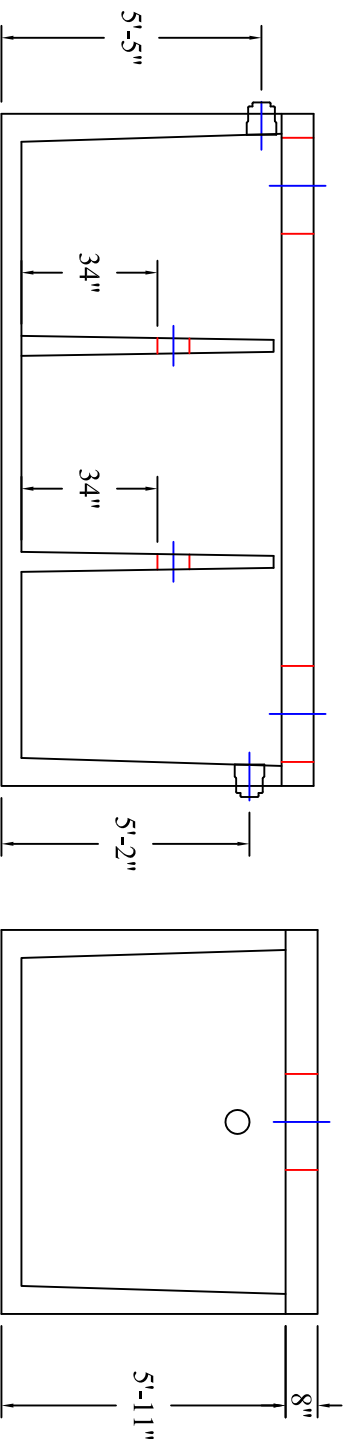
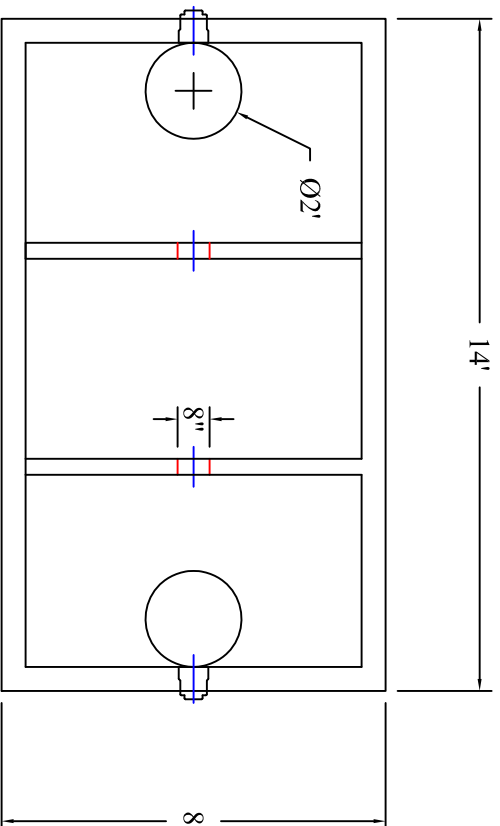
INLET & OUTLET BOOT MEETS
ASTM C 923, ACCEPTS 4" & 6" PVC

BUTYL SEALANT: MEETS ASTM
C 900, USED ON JOINTS

ACCESS OPENING SUITABLE FOR
24" RISER AND/OR RING & COVER
INTERNAL PIPING BY OTHERS
PER MUNICIPAL SPECS

CROSSOVERS TO BE 8" PVC

CALL FOR ADDITIONAL SPECS



Scale: 1/4" = 1'



**BARTOW
PRECAST**

770.382.4462
sales@bartowprecast.com
WWW.BARTOWPRECAST.COM



DRAWING INFORMATION

Drawn By: JJG

Checked By: 1

Revision: 12/18/18

Date: 12/18/18

APPROVED BY: _____

print: _____

sign: _____

*actual dimensions may vary slightly