

Columbia County 3,000 Gallon Grease Interceptor

MODEL: 110-03000

PRODUCT INFORMATION

3,000 Gallon
Grease Interceptor

Tank = 30,200 #
Lid = 10,700 #
DESIGN MAY VARY

SPECIFICATIONS

MEETS ASTM C 1613

RATING: A-16 (H-20), ASSUME
4" MAX EARTH COVER WITH 3'
WATER TABLE BELOW GRADE

CONCRETE: 5,000 PSI @ 28 DAYS

STEEL REINFORCEMENT: MEETS
ASTM A 615, PLACEMENT AS
REQUIRED BY DESIGN

INLET & OUTLET BOOT MEETS
ASTM C 923, ACCEPTS 4" & 6" PVC

BUTYL SEALANT: MEETS ASTM
C 900, USED ON JOINTS

ACCESS OPENING SUITABLE FOR
24" RISER AND/OR RING & COVER

INTERNAL PIPING BY OTHERS
PER MUNICIPAL SPECS

TANK INTERIOR COATED WITH
CONSEAL CS-55

CROSSOVERS TO BE 4" PVC



DRAWING INFORMATION

Drawn By: CTP

Checked By: _____

Revision: 1

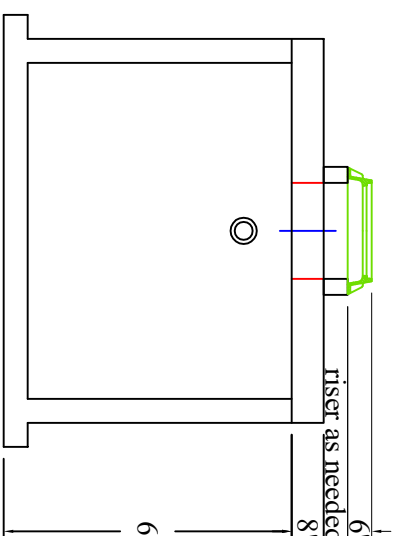
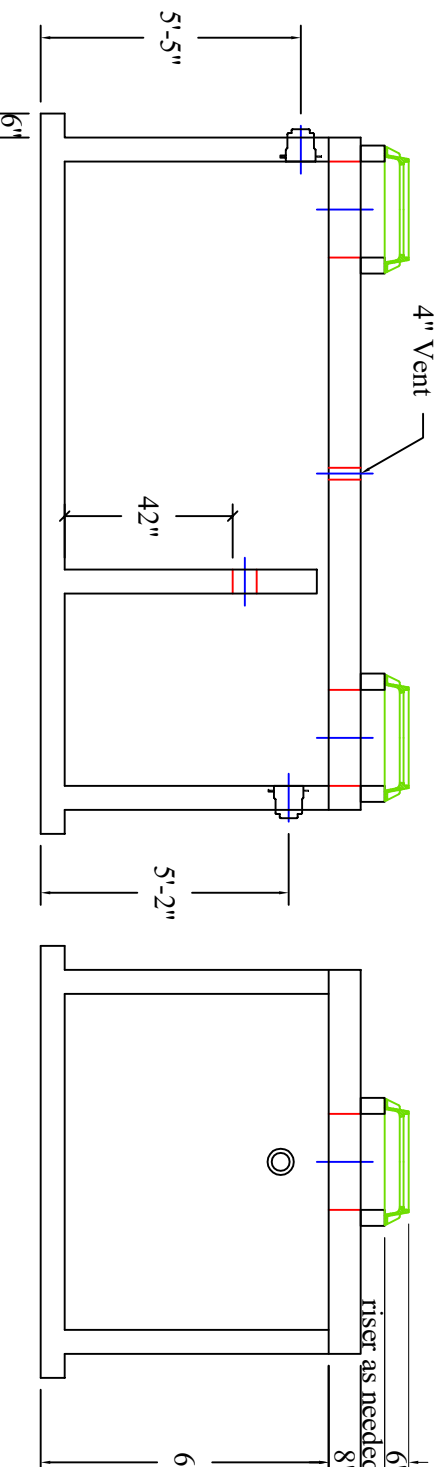
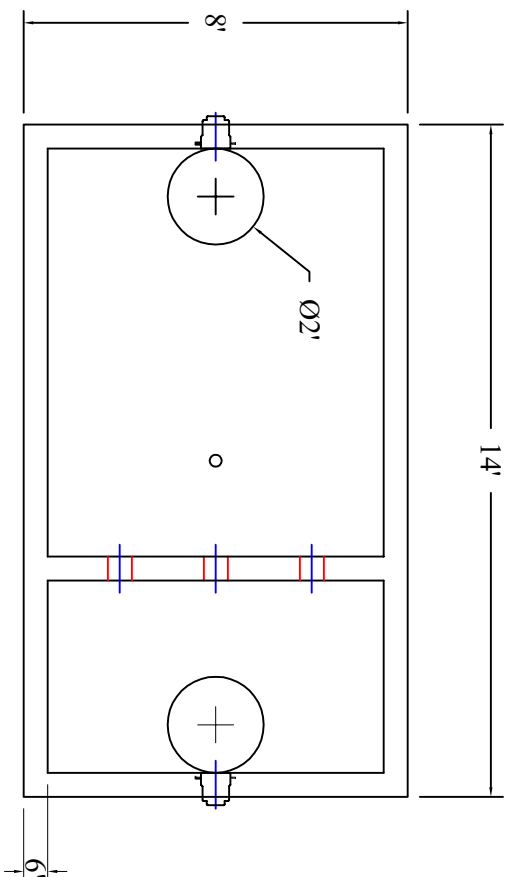
Date: 11/5/2024

APPROVED BY: _____

print: _____

sign: _____

*actual dimensions may vary slightly



Scale: 1/4" = 1'

