

SEPTIC TANK 2,500 GALLON CAPACITY

MODEL: 110-02500

PRODUCT INFORMATION

2,500 GALLON
SEPTIC TANK

TANK = 26,400 #
LID = 11,000 #
DESIGN MAY VARY

SPECIFICATIONS

MEETS ASTM C 1227

RATING: A-16 (H-20)

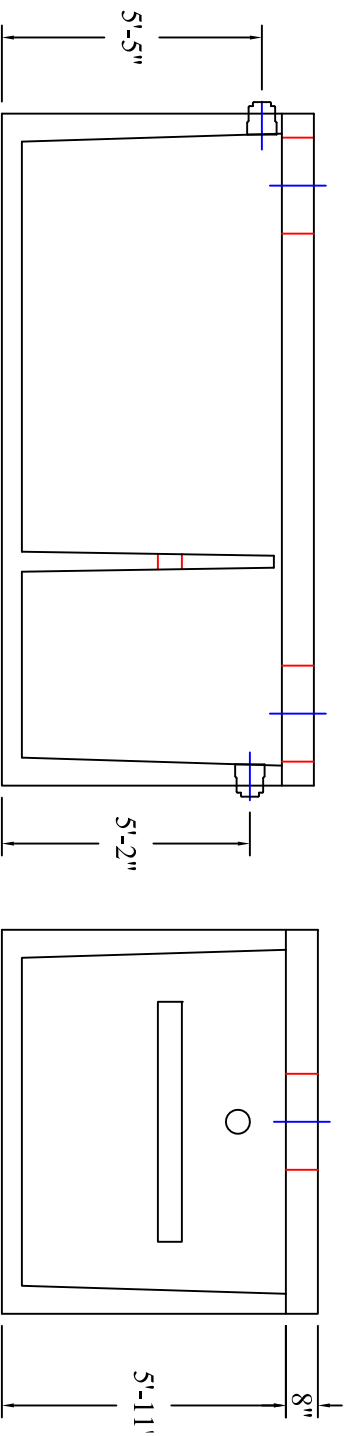
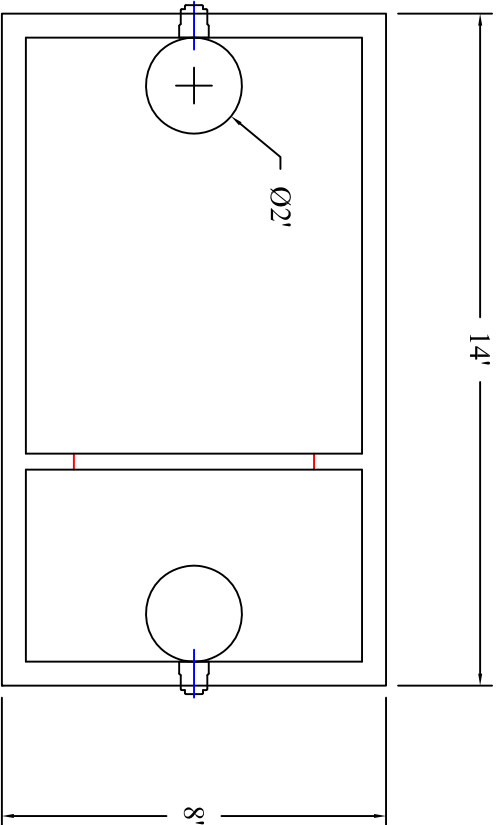
CONCRETE: 5,000 PSI @ 28 DAYS

STEEL REINFORCEMENT: MEETS
ASTM A 615, PLACEMENT AS
REQUIRED BY DESIGN

INLET & OUTLET BOOT MEETS
ASTM C 923, ACCEPTS 4" & 6" PVC

BUTYL SEALANT: MEETS ASTM
C 900, USED ON JOINTS

ACCESS OPENING SUITABLE FOR
24" RISER AND/OR RING & COVER



DRAWING INFORMATION

Drawn By: CBC
Checked By:
Revision:
Date: 11/9/18

APPROVED BY:

print:

sign:

*actual dimensions may vary slightly



**BARTOW
PRECAST**

770.382.4462
sales@bartowprecast.com
WWW.BARTOWPRECAST.COM

Scale: 1/4" = 1'