

Gainesville 2,500 Gallon Grease Interceptor

MODEL: 110-02500

PRODUCT INFORMATION

2,500 Gallon
Grease Interceptor

Tank = 20,500 #
Lid = 8,200 # Baffles = 1,600 # ea. (x2)
DESIGN MAY VARY

SPECIFICATIONS

MEETS ASTM C 1613

RATING: A-16 (H-20), ASSUME
4" MAX EARTH COVER WITH 3'
WATER TABLE BELOW GRADE

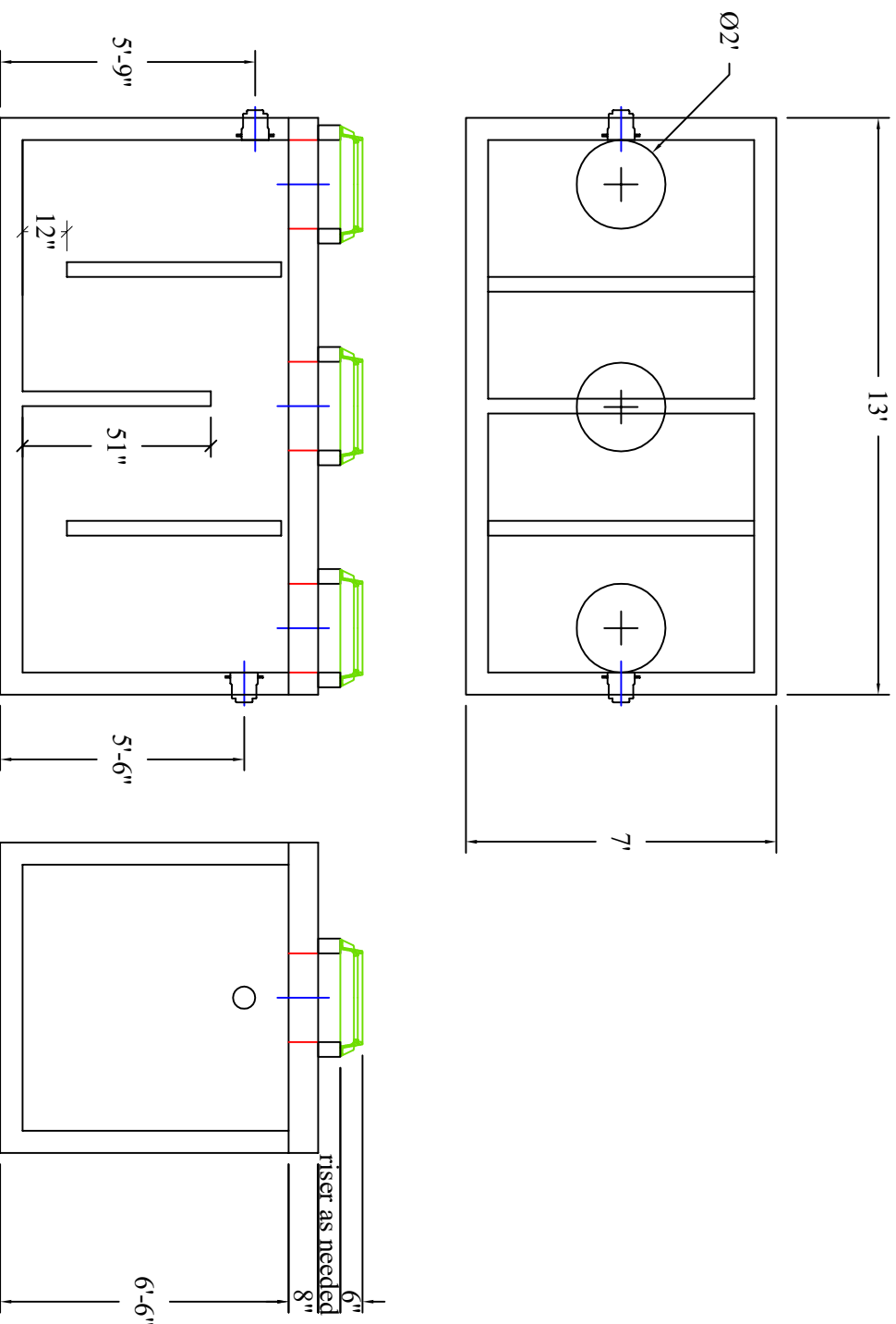
CONCRETE: 5,000 PSI @ 28 DAYS

STEEL REINFORCEMENT: MEETS
ASTM A 615, PLACEMENT AS
REQUIRED BY DESIGN

INLET & OUTLET BOOT MEETS
ASTM C 923, ACCEPTS 4" & 6" PVC

BUTYL SEALANT: MEETS ASTM
C 900, USED ON JOINTS

ACCESS OPENING SUITABLE FOR
24" RISER AND/OR RING & COVER
INTERNAL PIPING BY OTHERS
PER MUNICIPAL SPECS



Scale: 1/4" = 1'

DRAWING INFORMATION

Drawn By: CTP

Checked By: 1

Revision: 1

Date: 11/5/2024

APPROVED BY:

print: _____
sign: _____

*actual dimensions may vary slightly



**BARTOW
PRECAST**

770.382.4462
sales@bartowprecast.com
WWW.BARTOWPRECAST.COM