

# Glynn Co - Brunswick Joint Water & Sewer Commission 2,000 Gallon Grease Interceptor

MODEL: G1 2000/189

## PRODUCT INFORMATION

2,000 GALLON  
GREASE INTERCEPTOR

TANK= 22,500 #  
LID= 8,400 #  
DESIGN MAY VARY

## SPECIFICATIONS

MEETS ASTM C 1613

RATING: A-16 (H-20), ASSUME  
4" MAX EARTH COVER WITH 3'  
WATER TABLE BELOW GRADE

CONCRETE: 5,000 PSI @ 28 DAYS

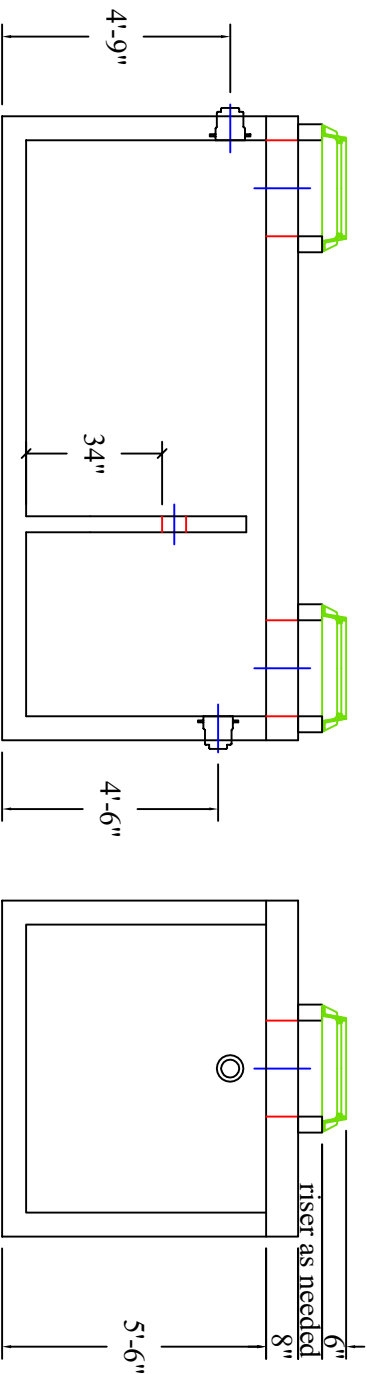
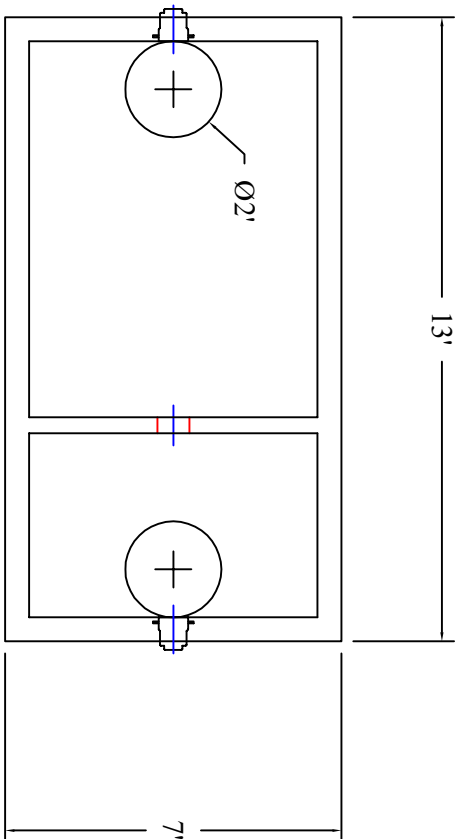
STEEL REINFORCEMENT: MEETS  
ASTM A 615, PLACEMENT AS  
REQUIRED BY DESIGN

INLET & OUTLET BOOT MEETS  
ASTM C 923, ACCEPTS 4" & 6" PVC

BUTYL SEALANT: MEETS ASTM  
C 900, USED ON JOINTS

ACCESS OPENING SUITABLE FOR  
24" RISER AND/OR RING & COVER  
INTERNAL PIPING BY OTHERS  
PER MUNICIPAL SPECS

CROSSOVER TO BE 6" PVC



Scale: 1/4" = 1'



## DRAWING INFORMATION

Drawn By: JIG

Checked By: 1

Revision: 1/6/2021

APPROVED BY:

print: \_\_\_\_\_  
sign: \_\_\_\_\_



**BARTOW  
PRECAST**

770.382.4462  
sales@bartowprecast.com  
WWW.BARTOWPRECAST.COM

\*actual dimensions may vary slightly