

# Forsyth County 1,500 Gallon Grease Interceptor

MODEL: 111-01536

## PRODUCT INFORMATION

1,500 Gallon  
Grease Interceptor

Tank = 11,700 #  
Lid = 5,600 #  
DESIGN MAY VARY

## SPECIFICATIONS

MEETS ASTM C 1613

RATING: A-16 (H-20), ASSUME  
4" MAX EARTH COVER WITH 3"  
WATER TABLE BELOW GRADE

CONCRETE: 5,000 PSI @ 28 DAYS

STEEL REINFORCEMENT: MEETS  
ASTM A 615, PLACEMENT AS  
REQUIRED BY DESIGN

INLET & OUTLET BOOT MEETS  
ASTM C 923, ACCEPTS 4" & 6" PVC

BUTYL SEALANT: MEETS ASTM  
C 900, USED ON JOINTS

ACCESS OPENING SUITABLE FOR  
24" RISER AND/OR RING & COVER  
INTERNAL PIPING BY OTHERS  
PER MUNICIPAL SPECS

CROSSOVER TO BE 8" PVC



## DRAWING INFORMATION

Drawn By: CTP

Checked By: 1

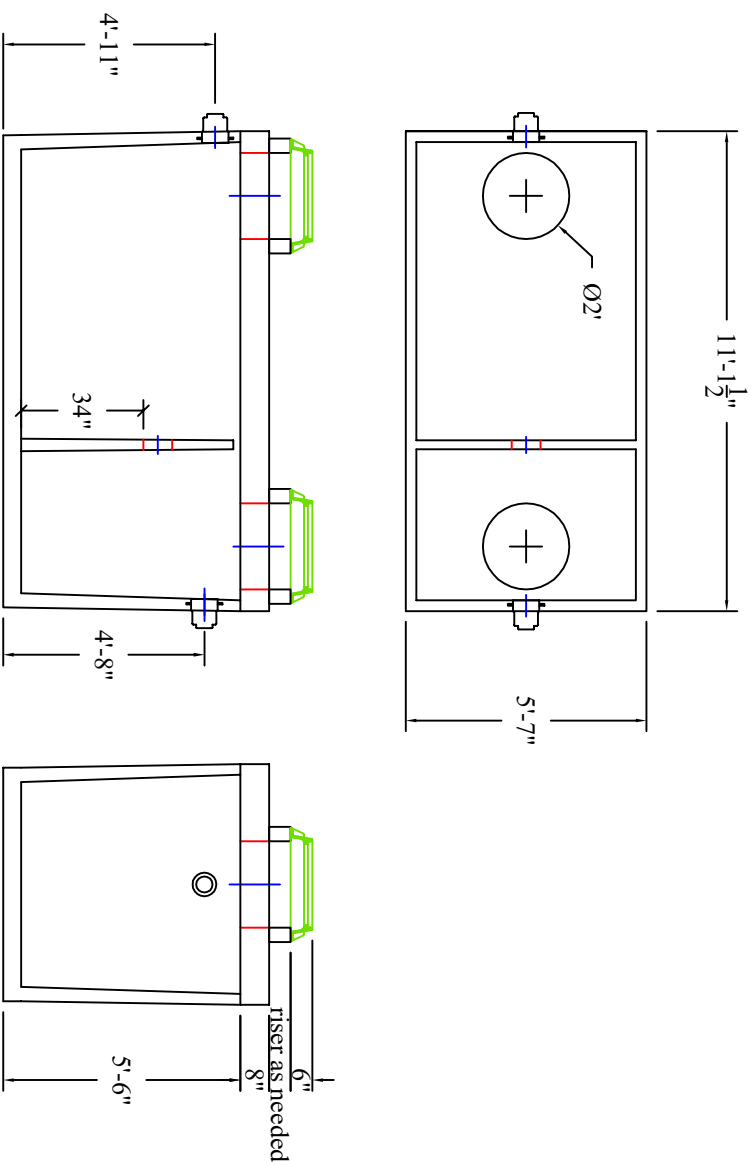
Revision: 1

Date: 11/5/2024

APPROVED BY: \_\_\_\_\_

print: \_\_\_\_\_

sign: \_\_\_\_\_



Scale: 1/4" = 1'



**BARTOW  
PRECAST**

770.382.4462  
sales@bartowprecast.com  
WWW.BARTOWPRECAST.COM

\*actual dimensions may vary slightly