

Etowah Water & Sewer Authority 1,500 Gallon Grease Interceptor

MODEL: 110-01520

PRODUCT INFORMATION
1,500 Gallon
Grease Interceptor

Tank = 17,700 #
Lid = 5,700 # Baffles = 1,000 # ea. (x2)
DESIGN MAY VARY

SPECIFICATIONS
MEETS ASTM C 1613

RATING: A-16 (H-20), ASSUME
4" MAX EARTH COVER WITH 3'
WATER TABLE BELOW GRADE

CONCRETE: 5,000 PSI @ 28 DAYS

STEEL REINFORCEMENT: MEETS
ASTM A 615, PLACEMENT AS
REQUIRED BY DESIGN

INLET & OUTLET BOOT MEETS
ASTM C 923, ACCEPTS 4" & 6" PVC

BUTYL SEALANT: MEETS ASTM
C 900, USED ON JOINTS

ACCESS OPENING SUITABLE FOR
24" RISER AND/OR RING & COVER
INTERNAL PIPING BY OTHERS
PER MUNICIPAL SPECS



DRAWING INFORMATION

Drawn By: CTP

Checked By: _____

Revision: 1

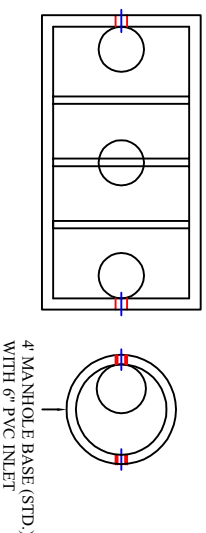
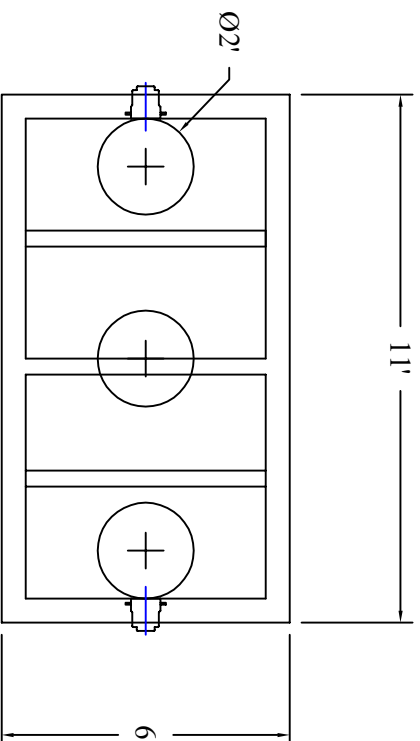
Date: 11/5/2024

APPROVED BY: _____

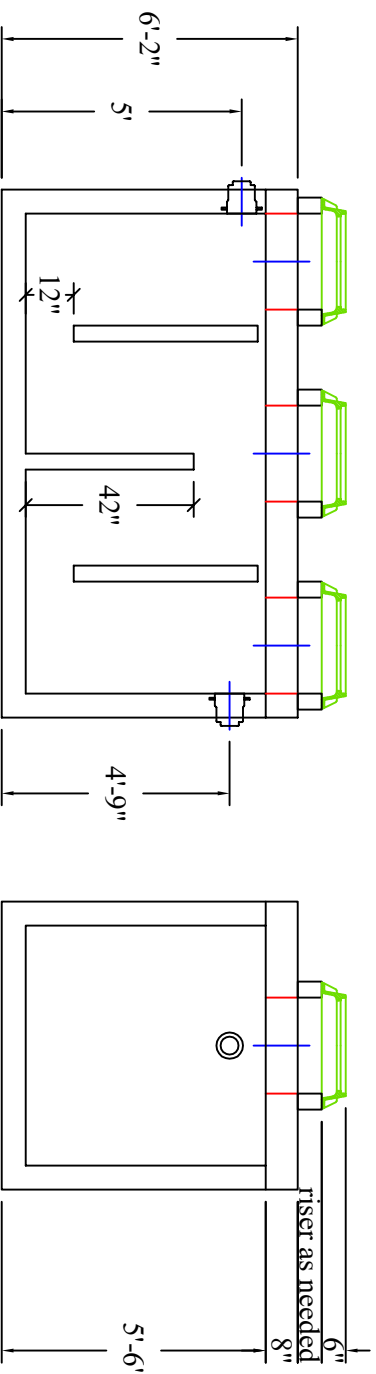
print: _____

sign: _____

Scale: 1/4" = 1'



PLAN VIEW with 4' MANHOLE



770.382.4462
sales@bartowprecast.com
WWW.BARTOWPRECAST.COM

*actual dimensions may vary slightly