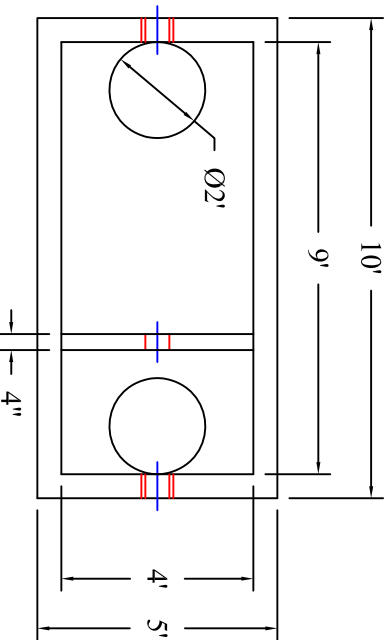
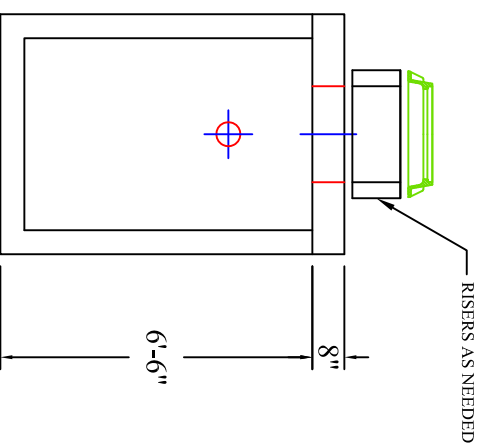
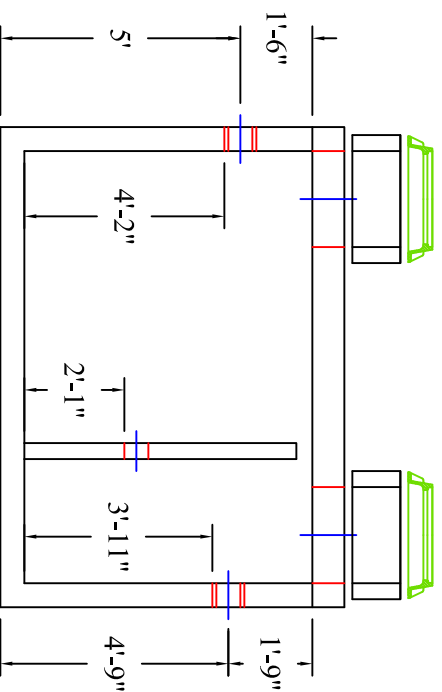


City of Dothan 1,000 Gallon Grease Interceptor



- LABEL TANK WITH:
 -INLET/OUTLET
 -MONTH/YEAR
 -CAPACITY

*EXTERIOR COATED



MODEL: 111-01000

PRODUCT INFORMATION
 1,000 GALLON
 GREASE INTERCEPTOR

TANK = 16,350 # LID = 5,000 #
 BAFPLE = 1,200 #
 DESIGN MAY VARY

SPECIFICATIONS
 MEETS ASTM C 1613

RATING: HS-20-44, ASSUME
 4" MAX EARTH COVER WITH 3'
 WATER TABLE BELOW GRADE

CONCRETE: 5,000 PSI @ 28 DAYS

STEEL REINFORCEMENT: MEETS
 ASTM A 615, PLACEMENT AS
 REQUIRED BY DESIGN

INLET & OUTLET BOOT MEETS
 ASTM C 923, ACCEPTS 4" & 6" PVC

BUTYL SEALANT: MEETS ASTM
 C 900, USED ON JOINTS

ACCESS OPENING SUITABLE FOR
 24" RISER AND/OR RING & COVER

INTERNAL PIPING BY OTHERS
 PER MUNICIPAL SPECS

CALL FOR ADDITIONAL SPECS



DRAWING INFORMATION

Drawn By: CBC
 Checked By: 3
 Revision: 7/27/16
 Date:

APPROVED BY: _____

print: _____

sign: _____

*actual dimensions may vary slightly



**BARTOW
 PRECAST**

770.382.4462
 sales@bartowprecast.com
 WWW.BARTOWPRECAST.COM

Scale: 1/4" = 1'